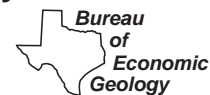


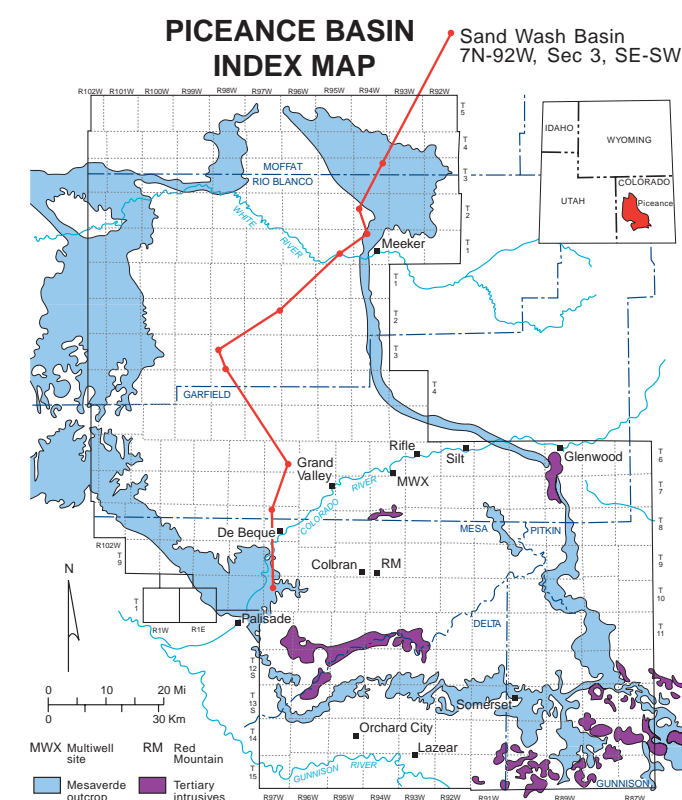
GENETIC-STRATIGRAPHIC CROSS SECTION OF THE COAL-BEARING WILLIAMS FORK FORMATION Piceance and Sand Wash Basins, Colorado

By Ronald G. McMurry and Roger Tyler

Bureau of Economic Geology
 Noel Tyler, Director
 The University of Texas at Austin



DOI: <https://doi.org/10.58783/cgs.of9707.eyyv2507>



EXPLANATION

- Twenty Mile Sandstone
- Rollins/Trout Creek Sandstone
- Coal package
- Upward coarsening

SSW

NNE

10S-97W-Sec 8 SE

8S-97W-Sec 5 SE-SW-NE

6S-97W-Sec 27 NW-SE

3S-98W-Sec 33 SE

3S-98W-Sec 17 NW-SE

2S-97W-Sec 13 SW-SE

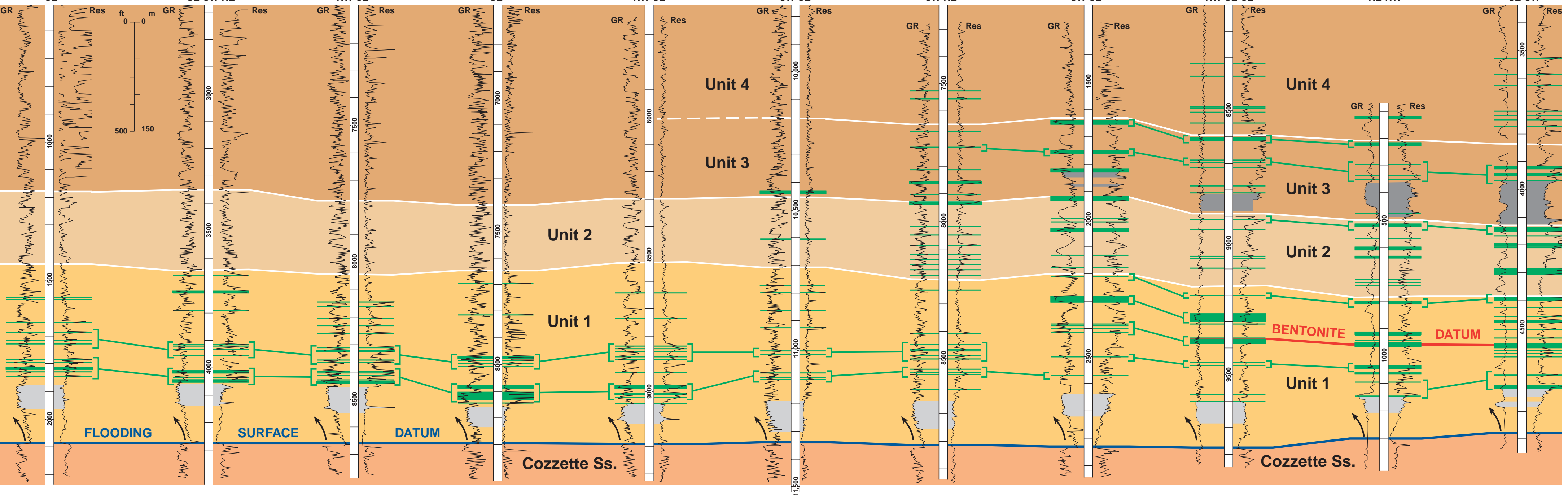
1N-95W-Sec 22 SW-NE

1N-94W-Sec 4 SW-SE

2N-94W-Sec 17 NW-SE-SE

3N-94W-Sec 1 NE-NW

7N-92W-Sec 3 SE-SW



CROSS SECTION INDICATING MISSING AND DUPLICATED STRATA DUE TO FAULTING (9S, 91W THROUGH 9S, 89W)

Piceance Basin, Colorado

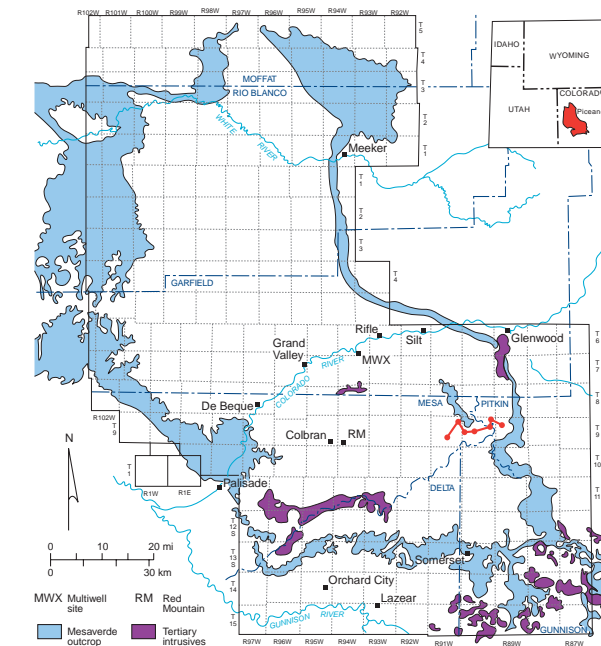
By Ronald G. McMurry and Roger Tyler

Bureau of Economic Geology
 Noel Tyler, Director
 The University of Texas at Austin



DOI: <https://doi.org/10.58783/cgs.of9707.eyyv2507>

PICEANCE BASIN INDEX MAP



Rollins/Trout Creek Sandstone Progradational Sequence A

Rollins/Trout Creek Sandstone Progradational Sequence B

Coal package

Upward coarsening

West

East

9S-91W-Sec 28
NE-SW

9S-91W-Sec 1
NW-NE

9S-90W-Sec 18
NE-NW

10S-90W-Sec 16
SE-SE

9S-90W-Sec 12
SW-NE

9S-90W-Sec 1
SW-NE

9S-89W-Sec 7
SW-NW

