

MAP SERIES 11

**DIRECTORY OF COLORADO  
URANIUM AND VANADIUM  
MINING AND MILLING ACTIVITIES**

by James D. Collier, A. L. Hornbaker  
and William L. Chenoweth

**COLORADO GEOLOGICAL SURVEY  
DEPARTMENT OF NATURAL RESOURCES  
STATE OF COLORADO  
DENVER, COLORADO**



1978



CONTENTS

Active Mines-State Map .....1  
Active Mines-Uravan Mineral Area Map .....2  
Inactive Mines-Uravan Mineral Area Map .....6  
Plants and Mills .....10  
Controllers .....11



**ACTIVE MINES**  
**STATE MAP [SCALE 1:500,000]**

<u>NO.</u>	<u>NAME</u>	<u>CONTROLLER</u>	<u>LOCATION</u>	<u>AVG.</u>	<u>TYPE</u>
				<u>TOT.</u>	
				<u>EMPL.</u>	
<u>FREMONT CO.</u>					
1.	Hansen*	Cyprus Mines - Wyoming Mineral Corp.	E 21, 17S, 73W	--	D
<u>GARFIELD CO.</u>					
2.	Garfield Mine	Union Carbide	NESW 34, 4S, 92W	1	U
3.	Rifle Mine	Union Carbide	NENW 35, 4S, 92W	2	U
<u>JEFFERSON CO.</u>					
4.	Aubrey Ladwig*	Energy Fuels Nuclear	SWSW 18, 3S, 70W	5	U
5.	Schwartzwalder*	Cotter Corp., Golden	NWSE 25, 2S, 71W	128	U
6.	Wright Lease*	Cotter Corp., Golden	NENW 32, 4S, 70W	2	U
<u>MOFFAT CO.</u>					
7.	Gertrude*	Union Carbide	N 17, 7N, 94W	17**	S
8.	John D*	Union Carbide	CSE 9, 7N, 94W	--	S
9.	Johnson*	Union Carbide	NENW 30, 7N, 94W	--	S
10.	School Section*	Union Carbide	SNE 16, 7N, 94W	--	D
<u>RIO BLANCO CO.</u>					
11.	Midnight	H. H. Harp	CNW 28, 2N, 92W	4	U
<u>SAGUACHE CO.</u>					
12.	Little Indian No. 36*	Homestake Mining	NWSE 9, 48N, 6E	7	S
13.	Pitch*	Homestake Mining	SESE 16, 48N, 6E	7	S
<u>TELLER CO.</u>					
14.	High Park*	Cyprus - Cotter	NE 36, 15S, 71W	12	S
<u>WELD CO.</u>					
15.	Grover Test Site*	Wyoming Mineral	WSW 19, 10N, 62W	24	SM

\* Uranium only

\*\* Total for Moffat Co.

**ACTIVE MINES**  
**URAVAN MINERAL AREA MAP (SCALE 1:100,000)**

<u>NO.</u>	<u>NAME</u>	<u>CONTROLLER</u>	<u>LOCATION</u>	<u>AVG.</u> <u>TOT.</u> <u>EMPL.</u>	<u>TYPE</u>
<u>MESA COUNTY</u>					
1.	Arrowhead No. 8	Atlas Minerals	CN 2, 50N, 18W	3	U
2.	B-Chitty-U	Ray Church	NWSE 18, 50N, 18W	4	U
3.	Belmont No.1 & 2	A. M. Carrico	WW 3, 50N, 18W	3	U
4.	Black Jack	S&M Explorations	CNE 31, 51N, 18W	2	U
5.	Bonanza	Atlas Minerals	WW25, 51N, 20W	3	U
6.	Buick-Bujan	Strategic Minerals	NE 31, 51N, 18W	3	U
7.	C-G-26	Rajah Ventures	SWSW 11, 50N, 18W	2	U
8.	C-G-27	Herbert Foster	CESE 12, 50N, 18W	2	U
9.	Elizabeth No.7-10	Atlas Minerals	CSW 32, 50N, 17W	--	U
10.	Hubbard Homestead	Hubbard Mining	ENE 35, 51N, 20W	2	U
11.	July	V. C. Moores	SENW 12, 50N, 18W	--	U
12.	La Sal Group	Atlas Minerals	36,51N,20W;31,51N,19W	2	U
13.	La Sal No. 4	Pioneer Uravan	NESE 36, 51N, 20W	2	U
14.	Liberty Bell	Marion Birch	WW 31, 51N, 18W	3	S
15.	Lost Dutchman	Pioneer Uravan	SESE 26, 51N, 20W	3	U
16.	Lumsden No. 1	Union Carbide	ENE 36, 51N, 20W	3	U
17.	Mammoth	Seymour & Myers	SWNE 31, 51N, 18W	--	U
18.	Maw	Adare Hill	CNW 4, 49N, 17W	3	S
19.	Mineral Channel Nos. 10 & 12	Atlas Minerals	WW 7, 50N, 17W	3	U
20.	New Verde	Union Carbide	NWNW 14, 50N, 18W	4	U
21.	October	Ince Minerals	CN 9, 50N, 19W	10	U
22.	Outlaw-Economy	Foster & Sons	SENW 12, 50N, 18W	2	U
23.	Packrat No. 1 & 2	Union Carbide	NENW 36, 51N, 20W	2	U
24.	Peaches (Black Mama)	Ince Minerals	NWNW 29, 51N, 18W	6	U
25.	Rajah 30	Union Carbide	NWSE 1, 50N, 20W	7	U
26.	Rajah 49	Union Carbide	SWSW 30, 51N, 19W	6	U
27.	Rosebud	Graham Mining	CSE 36, 51N, 19W	2	U
28.	Sun Spot-Cloud 1	Union Carbide	SESE 29, 51N, 19W	--	U
29.	Thornton	Pioneer Uravan	NWNW 31, 51N, 19W	5	U
30.	Wedge	Foster & Sons	CS 12, 50N, 18W	3	U
31.	Winfield- McCormick	W. Winfield - W. McCormick	C 33, 51N, 19W	5	U

MONTROSE COUNTY

1.	Alta	Monogram Mining	NENE 23, 48N, 18W	4	U
2.	Altair-Capella- Vega	Union Carbide	SWNE 13, 46N, 18W	--	U
3.	Anna Mae No. 1	Union Carbide	SN 18, 46N, 17W	3	U
4.	Apple Jack	Oliver & Buss	NSE 10, 48N, 18W	2	D
5.	Bagger	Union Carbide	SWSW 20, 47N, 17W	2	U
6.	Bitter Creek	Union Carbide	SESW 1, 46N, 17W	2	U
7.	Blackburn	Union Carbide	SENE 20, 46N, 17W	3	U
8.	Blondie	Oliver Flury	SESE 26, 48N, 18W	2	U
9.	Buckhorn-Eureka	Oliver&Buss; C&H Mng	CN 10, 48N, 19W	7	U
10.	Buckshot	Brooks Minerals	SWNW 31, 48N, 17W	3	U
11.	C-JD-5	Gates & Fox	NWSW 22, 46N, 17W	25	U

<u>NO.</u>	<u>NAME</u>	<u>CONTROLLER</u>	<u>LOCATION</u>	<u>AVG.</u> <u>TOT.</u> <u>EMPL.</u>	<u>TYPE</u>
12.	C-JD-6	Cotter Corp.	CSW 22, 46N, 17W	16	U
13.	C-JD-7	Cotter Corp.	NWSE 16, 46N, 17W	7	U
14.	C-JD-9	Cotter Corp.	ESW 30, 46N, 17W	7	U
15.	C-LP-21	Cotter Corp.	NSW 27, 47N, 17W	9	U
16.	C-LP-22	Ince Minerals	CSE 21, 47N, 17W	4	U
17.	C-LP-23	Energy Reserves	NWNE 1, 46N, 17W	4	U
18.	Cliff Dweller	Union Carbide	SWNW 24, 48N, 18W	2	U
19.	Club Mines (C-CM-25)	Taminco, Cotter Corp.	NWSE 33, 48N, 17W	8	U
20.	Coloradium	Union Carbide	SWSW 21, 47N, 17W	2	U
21.	Cripple Creek No. 2	Union Carbide	SESW 21, 47N, 17W	2	D
22.	Donald L	Union Carbide	SWSW 21, 47N, 17W	4	U
23.	Dugan Adit	Atlas Minerals	SWNE 22, 46N, 17W	3	U
24.	Echo Nos. 2 & 3	Glen&Michael Greager	SS 3, 45N, 18W	2	U
25.	Eula Belle	Union Carbide	SWNE 31, 49N, 17W	4	U
26.	Fairy Queen	Union Carbide	NWSE 10, 47N, 17W	--	U
27.	Farmer Girl	Monogram Mining	SS 22, 48N, 18W	2	U
28.	Fawn Springs No.9	Union Carbide	NENE 6, 45N, 17W	2	U
29.	Firebird	Union Carbide	SWSE 17, 47N, 17W	--	U
30.	Greager Group	Atlas Minerals	NWNW 4, 45N, 18W	--	U
31.	Greasy Spoon	Pioneer Uravan	ENE 26, 47N, 20W	5	U
32.	Happy Thought	Union Carbide	SENE 18, 46N, 17W	--	U
33.	Kevin	Union Carbide	NWNW 32, 46N, 17W	11	U
34.	King Solomon (C-AM-19)	Union Carbide	NE 24, 48N, 18W	44	U
35.	Last Chance No. 3	Williams, Inc.	CNE 34, 47N, 18W	4	U
36.	Lazy L	Liz Bunker	CNW 31, 48N, 17W	3	U
37.	Lexington	Union Carbide	CSW 1, 46N, 17W	2	U
38.	Little Dick	Union Carbide	NWNW 30, 48N, 17W	3	U
39.	Little Faun No. 1	Oliver & Buss	CE 10, 48N, 19W	2	U
40.	Long Park 1,13, 15,16	Union Carbide	SESW 27, 47N, 17W	3	U
41.	Mary Jane	E. Johannsen	SWNE 10, 45N, 19W	3	U
42.	Maybe Nos. 5 & 6	Union Carbide	SNE 26, 46N, 17W	4	U
43.	Mill No. 2	Union Carbide	NWNW 4, 48N, 17W	2	U
44.	Mineral Joe Group	Atlas Minerals	CS 22, 46N, 17W	5	U
45.	Mum	Pioneer Uravan	SN 36, 47N, 17W	3	U
46.	Nil-Trace	Union Carbide	CNW 26, 46N, 17W	6	U
47.	Peanut Claims	Atlas Minerals	31, 32, 46N, 17W	2	U
48.	Peggy	Doris Binder	CN 7, 47N, 17W	1	U
49.	Picket Corral	Andrews Mining	NNE 4, 45N, 18W	4	U
50.	Prayer Nos. 8 & 9	Union Carbide	SESE 14, 47N, 20W	2	S
51.	RAM	Union Carbide	SWSW 33, 48N, 17W	--	U
52.	Rabbit Foot Nos. 1 & 2	Rus Neesham	SWNW 1, 45N, 18W	1	U
53.	Radium Hill No.10	Union Carbide	C 15, 45N, 18W	3	U
54.	Red Flag	Atlas Minerals	SWSW 33, 46N, 18W	2	D
55.	Rex Mine	Cleghorn & Washburn	NWNW 10, 47N, 17W	8	U
56.	Rim Rock No. 5	Union Carbide	SESE 9, 45N, 18W	3	U
57.	Rye No. 8	Native Reserve	SENE 32, 46N, 18W	3	U
58.	St. Patrick No. 7	C. W. Bunker	NESE 10, 47N, 20W	3	U
59.	Sandy	Union Carbide	NENW 29, 48N, 17W	2	U

<u>NO.</u>	<u>NAME</u>	<u>CONTROLLER</u>	<u>LOCATION</u>	<u>AVG.</u> <u>TOT.</u> <u>EMPL.</u>	<u>TYPE</u>
60.	September Morn	Union Carbide	SESE 10, 45N, 18W	2	U
61.	Sesmo	Atlas Minerals	ENE 24, 47N, 18W	3	D
62.	Silver Dollar	C & D Exploration	C 28, 47N, 17W	2	U
63.	Starlight No. 7	Atlas Minerals	SESW 33, 46N, 18W	3	S
64.	Sunbeam Group	Union Carbide	CSW 10, 47N, 17W	8	U
65.	Sunrise Group	Micro Copper	SESE 33, 46N, 18W	2	U
66.	Tango	Union Carbide	SESW 18, 46N, 17W	2	U
67.	Thad	Union Carbide	NWNW 32, 46N, 17W	11	U
68.	Twilight No. 1	U.S. Bur. Mines	NSE 3, 48N, 18W	3	U
69.	URA	Union Carbide	NWNW 32, 46N, 17W	11	U
70.	Uranium Girl	Benson Mining	SWSW 14, 47N, 20W	3	U
71.	Wedge No. 2	Cleghorn & Washburn	NESW 10, 47N, 17W	2	U
72.	Whiteface	Union Carbide	NWNE 34, 47N, 17W	--	U
73.	Yellowbird	Oliver & Buss	CS 9, 48N, 19W	4	D

SAN MIGUEL COUNTY

1.	Alice (C-SR-15)	Cougar Ventures	SSW 23, 44N, 19W	2	U
2.	Ann (C-SR-16)	St. Jude Mining	SS 16, 43N, 19W	2	U
3.	Black Spider	C. L. Stewart	SWNW 30, 43N, 19W	2	U
4.	Boondock	Woodbury Mining	ENE 13, 44N, 20W	--	U
5.	Breezy	Union Carbide	C 25, 45N, 18W	4	D
6.	Brighton(C-SR-11)	Dawson Mining	SWSE 8, 43N, 19W	3	U
7.	Burro Mines	Union Carbide	CW 29, 44N, 18W	8	U
8.	C-SR-12	St. Jude Mining	SWNE 32, 43N, 18W	3	U
9.	C-SR-13	Ryan Ltd.	CSE 30, 44N, 18W	6	U
10.	C-SR-15A	Union Carbide	SESE 22, 44N, 19W	--	D
11.	C-SR-16A	Dynove, Ltd.	SWNE 14, 43N, 19W	4	U
12.	Canyon	Keogh & Shumway	SESE 19, 43N, 18W	--	U
13.	Carnation	Pioneer Uravan	NESW 13, 44N, 18W	5	U
14.	Centennial	Brooks Minerals	SESE 36, 43N, 18W	15	U
15.	Civet Cat	Gold Bar Resources	NESE 1, 44N, 20W	3	U
16.	Cougar (C-SR-15)	Cougar Ventures	NWSE 23, 44N, 19W	6	U
17.	Dermeo No. 2 - Bigler Shaft	Union Carbide	NENE 2, 42N, 20W	114	U
18.	Dolores River	Brooks Minerals	CNE 1, 42N, 18W	2	U
19.	Early Morn No. 2	Jack Thompson	SSE 14, 44N, 17W	2	U
20.	Ellison Nos. 1 & 2 (C-SR-13)	Ryan Ltd.	NWNE 31, 44N, 18W	2	U
21.	Fox Group	Jack Milling	CW 26, 43N, 18W	2	S
22.	GMG	Union Carbide	SESE 13, 44N, 18W	--	U
23.	Hangover	Sutherland Mng	ESE 20, 43N, 19W	--	U
24.	Hawkeye (C-SR-13)	Ryan Ltd.	NESW 32, 44N, 18W	3	U
25.	Helen No. 1 (C-SR-15)	Cougar Ventures	SWSW 23, 44N, 19W	3	U
26.	Herbert (C-SR-13)	Ryan Ltd.	NNW 31, 44N, 18W	3	U
27.	Ike (C-SR-11)	Dawson Mining	SWSE 8, 43N, 19W	7	U
28.	Jack Knife	Pioneer Uravan	NNW 21, 45N, 18W	2	U
29.	Letty Jones	Cotter Corp.	SENE 13, 43N, 20W	9	U
30.	Lonesome No. 34	Pioneer Uravan	CN 36, 45N, 18W	--	U
31.	Lone Star Group	J & J Mining	SWNE 4, 43N, 19W	--	U



<u>NO.</u>	<u>NAME</u>	<u>CONTROLLER</u>	<u>LOCATION</u>	<u>AVG.</u> <u>TOT.</u> <u>EMPL.</u>	<u>TYPE</u>
32.	Lucky Strike	Hannert Mining	SESW 19, 43N, 20W	--	U
33.	Magpie No. 2	Pioneer Uravan	ESW 25, 45N, 18W	3	U
34.	Murietta	Shiprock Ltd.	NSW 25, 45N, 18W	3	U
35.	Patrick D (C-SR-16)	St. Jude Mining	SWNE 16, 43N, 19W	2	U
36.	Parrot Railroad Tunnel	Brooks Minerals	SWSW 26, 43N, 18W	2	U
37.	Penju	Jack Thompson	NWSW 8, 43N, 16W	2	S
38.	Pond	Union Carbide	NSE 15, 44N, 17W	--	U
39.	Radium Group - Blackbird	Atlas Minerals	NENW 5, 43N, 19W	2	U
40.	Radium No. 6	Atlas Minerals	ENW 9, 43N, 19W	2	U
41.	Radium Nos. 9, 10, 11	Atlas Minerals	SESW 4, 43N, 19W	2	U
42.	Riverview	Union Carbide	SENE 33, 45N, 18W	2	S
43.	Sears Group	Jack Thompson	CNW 33, 45N, 18W	2	U
44.	Sego Lily Lou	Pioneer Uravan	SWNE 31, 45N, 17W	5	U
45.	Snyder & Peterson	Union Carbide	SWSW 2, 42N, 20W	*	U
46.	Summit No. 21 (C-SR-10)	Trio Industries	NESE 28, 43N, 19W	3	U
47.	Sun Cup No. 2	Brooks Minerals	SENE 31, 42N, 17W	17	U
48.	Sunday	Union Carbide	SWSE 13, 44N, 18W	41	U
49.	Tailholt	Charles Pickens	CSW 27, 44N, 19W	2	U
50.	Uintah	Atlanta Mng Co.	NWSW 28, 43N, 19W	2	U
51.	Veta Mad (C-SR-13A)	Cotter Corp.	NWNW 30, 44N, 18W	6	U
52.	Wilmarth	Union Carbide	CWW 24, 44N, 17W	2	S
53.	Windswept	Union Carbide	SESE 15, 44N, 17W	3	U

\*same as Doremo No. 2

**INACTIVE MINES**  
**URAVAN MINERAL AREA MAP (SCALE 1:100,000)**

<u>NO.</u>	<u>NAME</u>	<u>LOCATION</u>	<u>NO.</u>	<u>NAME</u>	<u>LOCATION</u>
<u>MESA COUNTY</u>			55.	Lode	NESE 32, 15S, 104W
1.	Ajax	NESE 24, 51N, 19W	56.	Lopaz No. 2	CNW 22, 50N, 19W
2.	Ajax	NESE 19, 51N, 19W	57.	Lost Indian	SESW 30, 51N, 19W
3.	Arrowhead	SWSE 3, 50N, 18W	58.	Maverick	SESW 9, 50N, 18W
4.	Arrowhead No. 4	SNW 2, 50N, 18W	59.	Maverick	SESW 3, 50N, 18W
5.	Arrowhead No. 5	NESE 2, 50N, 18W	60.	Maverick No. 6	SNE 3, 50N, 18W
6.	Arrowhead No. 14	SSW 2, 50N, 18W	61.	Mesa No. 5	NWSW 7, 50N, 17W
7.	Arrowhead No. 17	WSE 2, 50N, 18W	62.	Mineral Channel No. 9	SENE 12, 50N, 18W
8.	Arrowhead No. 18	CN 2, 50N, 18W	63.	Neglected	ENW 12, 50N, 18W
9.	Arrowhead No. 19	SWNE 2, 50N, 18W	64.	Nielson	NSE 10, 50N, 19W
10.	Arrowhead No. 21	NWSW 2, 50N, 18W	65.	Nigger Baby	SESE 19, 51N, 18W
11.	Arrowhead No. 30	NESE 3, 50N, 18W	66.	Okan	NSE 31, 51N, 18W
12.	Arrowhead No. 33	SWNE 3, 50N, 18W	67.	Outlaw No. 23	CSW 19, 50N, 17W
13.	Arrowhead No. 34	NWSE 3, 50N, 18W	68.	Palisade No. 1	SESW 25, 15S, 104W
14.	Austin No. 4	NENE 31, 51N, 19W	69.	Pay Rock No. 1	CNW 19, 51N, 18W
15.	Blackbird	NESE 4, 49N, 17W	70.	Pay Rock No. 3	NENE 24, 51N, 19W
16.	Black Streak	NSE 31, 50N, 17W	71.	Pay Rock No. 14	SESE 24, 51N, 19W
17.	Bluebird	CSE 19, 50N, 17W	72.	Pay Rock No. 15	SWSE 18, 51N, 18W
18.	Blue Creek	NESE 19, 50N, 17W	73.	Peach	SENE 25, 50N, 18W
19.	Blue Mesa View	NESW 30, 50N, 17W	74.	Peach No. 10	NENE 25, 50N, 18W
20.	Blue Ribbon No. 7	WSE 9, 50N, 18W	75.	Protector	NWSW 31, 51N, 18W
21.	Buena Vista	WNE 32, 51N, 19W	76.	Ronnie No. 2	SSE 12, 50N, 18W
22.	Calamity	SESW 11, 50N, 18W	77.	Small Spot	NENW 9, 50N, 18W
23.	Calamity No. 15	NWNE 12, 50N, 18W	78.	Snowshoe	SWSW 6, 50N, 17W
24.	Calamity No. 16	WNW 11, 50N, 18W	79.	Stormy Treasure	CN 2, 49N, 18W
25.	Cave	SESW 4, 50N, 19W	80.	Sunflower	CE 4, 50N, 18W
26.	Cherokee Shaft	NESE 36, 51N, 20W	81.	Tee Pee Pole	SESW 36, 50N, 18W
27.	Chico	NESE 36, 51N, 19W	82.	Vanaking No. 1	SS 19, 51N, 18W
28.	Cliffdweller	WNW 23, 50N, 18W	83.	Yellowbird No. 5	SESE 30, 50N, 17W
29.	Climax	SWSW 30, 50N, 17W			
30.	Crow Nest	CSW 12, 50N, 18W	<u>MONTROSE COUNTY</u>		
31.	Depression	SWNE 18, 50N, 18W	1.	Adax	SNE 11, 48N, 18W
32.	Depression No. 2	SNE 10, 50N, 18W	2.	Allstars	SWSW 22, 48N, 17W
33.	Eliz	NWNW 4, 49N, 17W	3.	American Eagle	SNE 10, 45N, 19W
34.	Eliz No. 3	WSW 33, 50N, 17W	4.	Anchor	NWSW 2, 48N, 18W
35.	Eliz No. 5	SWNW 33, 50N, 17W	5.	April	SENE 10, 45N, 18W
36.	Emerson	SESE 19, 50N, 17W	6.	Arcturus	SENE 13, 46N, 18W
37.	Fountain of Youth	NENW 31, 51N, 18W	7.	Aztec	NNE 20, 46N, 17W
38.	Fraction	SSE 1, 50N, 18W	8.	Babe Ruth	WNW 14, 45N, 18W
39.	G-1	CSW 7, 50N, 17W	9.	Baby Fawn	SESW 6, 45N, 17W
40.	G-2 Shaft	NWSE 18, 50N, 17W	10.	Barclay	NESE 6, 47N, 17W
41.	G-3	NENE 13, 50N, 18W	11.	Beaver	ESE 32, 48N, 17W
42.	Hanson No. 3	WSW 17, 50N, 17W	12.	Betty Jean	NESE 22, 48N, 18W
43.	Hidden Treasure	SESE 4, 50N, 18W	13.	Big Bull	NWSE 12, 45N, 18W
44.	Homestead	SNE 31, 50N, 17W	14.	Big Dick	SWSE 19, 48N, 17W
45.	John Brown	CNE 7, 50N, 19W	15.	Birthday	NENW 2, 46N, 17W
46.	Johnnie Mae	WNE 36, 51N, 20W	16.	Black Dinah	SENE 28, 47N, 17W
47.	Karms	WNE 12, 50N, 20W	17.	Black Foot	WNW 11, 47N, 17W
48.	Klondyke	ESE 25, 50N, 18W	18.	Black Jack	SWSW 35, 46N, 18W
49.	Lavada	ENW 23, 50N, 18W	19.	Black Rock	NWNW 24, 48N, 18W
50.	Lee No. 1	NSW 21, 50N, 18W	20.	Bluebird	NNE 25, 48N, 18W
51.	Lee No. 4	SSW 16, 50N, 18W	21.	Bobcat	CNE 19, 47N, 17W
52.	Lincoln	ESW 31, 51N, 18W	22.	Bobtail	CSE 18, 46N, 17W
53.	Little Johnny	NENE 31, 51N, 18W	23.	Bogus Shaft	NENW 33, 49N, 17W
54.	Little Maverick	NENE 32, 50N, 18W			

<u>NO.</u>	<u>NAME</u>	<u>LOCATION</u>	<u>NO.</u>	<u>NAME</u>	<u>LOCATION</u>
24.	Brushy Basin No. 1	SENE 10, 46N, 20W	80.	Joe	NWNW 29, 48N, 17W
25.	Brushy Basin No. 3	CSW 11, 46N, 20W	81.	Joe Dandy	ENW 21, 46N, 17W
26.	Buckskin	NSE 35, 46N, 18W	82.	La Salle	SNE 5, 47N, 17W
27.	Butterfly	SENW 13, 47N, 20W	83.	Lark No. 8	SWNE 11, 45N, 18W
28.	Calverts	ESE 3, 45N, 18W	84.	Lilly Love	CNW 32, 47N, 19W
29.	Canopus	ENE 13, 46N, 18W	85.	Little Buckhorn	WNE 21, 48N, 18W
30.	Carpathia	NESW 18, 47N, 17W	86.	Little Joe	NENE 14, 48N, 18W
31.	Cashin	NWSE 22, 47N, 19W	87.	Log Cabin	ESW 35, 46N, 18W
32.	Cliffdweller	SENW 22, 47N, 19W	88.	Long Cedar	SNW 35, 46N, 17W
33.	Club No. 7	SWNW 4, 47N, 17W	89.	Long John	CNE 7, 46N, 19W
34.	Club Sandwich	NNE 30, 48N, 17W	90.	Long Park	CSW 27, 47N, 17W
35.	Columbus	NESE 2, 46N, 17W	91.	Long Park No. 6	NSE 28, 47N, 17W
36.	Cue Ball	NWNE 3, 47N, 17W	92.	Long Park No. 9	WSE 28, 47N, 17W
37.	Dan Patch	WSW 35, 47N, 17W	93.	Long Park No. 10	SSE 28, 47N, 17W
38.	Deer Shaft	CNW 27, 46N, 17W	94.	Lucky	WSE 19, 47N, 19W
39.	Diana	NNW 14, 45N, 18W	95.	Lucky No. 1	CNW 30, 47N, 19W
40.	Dolores	SESW 19, 48N, 17W	96.	Lucky Blunder	SENW 18, 47N, 17W
41.	Donna K	NSW 31, 47N, 16W	97.	Lucky Dog	NENE 29, 48N, 17W
42.	Dorothy	SESW 17, 47N, 17W	98.	Madame Curie	NWSE 19, 48N, 19W
43.	Duchess	NWNW 34, 48N, 18W	99.	Margie	WSE 30, 48N, 17W
44.	Echo No. 4	SESW 3, 45N, 18W	100.	Marjorie Ann	NENE 11, 47N, 20W
45.	Echo No. 6	SWSW 2, 45N, 18W	101.	Martha Belle	SWNE 6, 48N, 17W
46.	8 Ball	SNW 3, 47N, 17W	102.	Mary	NWSE 6, 45N, 17W
47.	Elray	WNE 30, 47N, 19W	103.	Mary Ann No. 1	NWSW 18, 46N, 17W
48.	Elroy	NSE 19, 47N, 19W	104.	Mary Anna	NESW 18, 46N, 17W
49.	Equinox	NWSE 11, 48N, 18W	105.	Maud	NESW 14, 47N, 20W
50.	Eva	NESW 13, 47N, 20W	106.	Media	NNW 34, 47N, 17W
51.	Evening Star	SENE 11, 47N, 20W	107.	Merry Christmas	NNW 11, 48N, 18W
52.	Fawn Springs No. 5	SNW 6, 45N, 17W	108.	Merry Widow	SENW 10, 47N, 17W
53.	Firecracker	SSW 35, 47N, 17W	109.	Mill No. 4	ENE 5, 47N, 17W
54.	First National Bank	NENW 28, 47N, 17W	110.	Mineral Joe	NSE 21, 46N, 17W
55.	Forty Five Ninety	SESW 10, 47N, 17W	111.	Mineral Park No. 3	SWSE 27, 47N, 17W
56.	4th July	NWSE 24, 48N, 18W	112.	Mineral Park No. 5	SSW 26, 47N, 17W
57.	Fox	NENW 30, 48N, 17W	113.	Monogram	NWSW 17, 46N, 17W
58.	Golden Cycle	NNE 24, 48N, 18W	114.	Moonbeam	SENW 20, 47N, 17W
59.	Golden Eagle	SSW 10, 47N, 17W	115.	Morning Glory	SWNE 29, 47N, 19W
60.	Good Hope	SNE 10, 47N, 17W	116.	Morning Star	NSE 28, 46N, 19W
61.	Great Western	NWSW 20, 47N, 17W	117.	Morning Star	SENW 12, 47N, 20W
62.	Groundhog	NWNE 20, 47N, 17W	118.	New Yellow Spot	SWSW 6, 47N, 19W
63.	Guadalcanal	NESW 27, 47N, 17W	119.	North Star	SENE 14, 48N, 18W
64.	Gyp Mine	SWNW 11, 45N, 19W	120.	Old Grandad	SS 6, 45N, 17W
65.	Hatch No. 1	NENW 10, 45N, 18W	121.	Old Salt Lick	WSE 29, 48N, 17W
66.	Hardrock	NESW 7, 46N, 16W	122.	Opera Box	SWSE 17, 46N, 17W
67.	Henry Clay	NSE 20, 47N, 17W	123.	Ophir	SESE 24, 48N, 18W
68.	Hidden Basin	WSW 16, 47N, 17W	124.	Oversight	SWNE 21, 46N, 17W
69.	Hobo	SENW 32, 46N, 18W	125.	Pattie	NENW 3, 45N, 18W
70.	Honeymoon	CSW 20, 47N, 17W	126.	Paradox D	CNE 21, 46N, 17W
71.	Horsehair	SWNE 2, 45N, 18W	127.	Paradox View	SWSW 20, 47N, 17W
72.	Howling Coyote	CNW 33, 47N, 19W	128.	Paradox View No. 2	SNE 2, 46N, 17W
73.	Hummer	SWNW 21, 46N, 17W	129.	Peanut No. 3	WSW 32, 46N, 17W
74.	Indian Herry's Cabin	NNE 2, 45N, 18W	130.	Peg Leg	SESE 18, 47N, 17W
75.	Irene	NESW 29, 48N, 17W	131.	Phonograph	NESW 20, 47N, 17W
76.	Jane	NSE 6, 45N, 17W	132.	Pluto	NENW 13, 46N, 18W
77.	J.B. No. 4	SENE 3, 47N, 17W	133.	Poor Boy	NWNW 3, 48N, 18W
78.	J.J.	NWNW 26, 46N, 17W	134.	Quo Vadis	WNW 2, 48N, 18W
79.	J.M.	NWSW 33, 48N, 17W	135.	Radium Cycle	NESW 8, 48N, 19W
			136.	Rajah	NWNE 12, 48N, 19W
			137.	Rambler	NESW 33, 48N, 17W

<u>NO.</u>	<u>NAME</u>	<u>LOCATION</u>
138.	Rattlesnake	NNE 10, 47N, 17W
139.	Rattlesnake	SWNE 2, 47N, 20W
140.	Raven	CSW 3, 45N, 19W
141.	Raven	ESW 30, 48N, 17W
142.	Redbird	CNE 4, 45N, 18W
143.	Redbird	SESE 5, 48N, 19W
144.	Red Bird No. 20	NESW 5, 48N, 19W
145.	Red Cow	CSW 2, 48N, 18W
146.	Red Sox	NWNW 24, 48N, 18W
147.	Rim Rock	WNE 16, 45N, 18W
148.	Rim Rock No. 3	CSE 9, 45N, 18W
149.	Rim Rock Blues	NN 1, 45N, 18W
150.	Rim Rock Blues No. 5	NWNE 2, 45N, 18W
151.	Rock Raven	SESW 35, 48N, 17W
152.	Rock Red No. 5	NWNE 28, 48N, 18W
153.	Rock Rock	SENE 28, 48N, 18W
154.	Saint Patrick	NWSW 6, 47N, 19W
155.	Saint Patrick No.9	CSE 10, 47N, 20W
156.	Sam	NESE 36, 46N, 18W
157.	School Marm	NNE 2, 45N, 18W
158.	Sego Lily	CNE 32, 47N, 19W
159.	Shamrock	SESW 29, 48N, 17W
160.	Shattuck Denn	SESW 6, 47N, 17W
161.	Sphinx	NWSE 20, 47N, 17W
162.	Star No. 6	WNW 27, 48N, 17W
163.	Star No. 13	NESW 27, 48N, 17W
164.	Summer	SWNE 2, 47N, 20W
165.	Sunrise	SENE 23, 48N, 19W
166.	Teapot Dome	SENE 1, 45N, 18W
167.	Thunderbolt	SWSW 22, 46N, 17W
168.	Three Jacks	SWNW 13, 47N, 20W
169.	Too High	NESE 36, 47N, 20W
170.	Town House	SWSW 21, 48N, 17W
171.	TNT No. 2	SWNW 21, 47N, 17W
172.	TNT No. 3	NENW 21, 47N, 17W
173.	Tramp No. 2	SENE 6, 47N, 17W
174.	Triangulation	NENE 34, 47N, 17W
175.	Tripod	NWSW 20, 47N, 17W
176.	Two Bits	SWNE 34, 46N, 18W
177.	U.S. Grant	NENE 7, 47N, 17W
178.	Valley View	CSE 7, 48N, 19W
179.	Valley View	NENE 29, 47N, 17W
180.	Vanadium King No.2	NESW 22, 47N, 17W
181.	Virgin	SWSW 22, 47N, 17W
182.	Vista Grande	NESE 2, 47N, 20W
183.	Wedge	SESE 2, 47N, 20W
184.	Wednesday	CSE 22, 47N, 17W
185.	West	NESE 34, 46N, 18W
186.	Whitney	SNW 35, 47N, 17W
187.	Wildcat No. 3	NENE 28, 48N, 18W
188.	Wildcat No. 8	CNW 27, 48N, 18W
189.	Wildhorse	SWNE 11, 48N, 18W
190.	Wild Steer	WNW 13, 46N, 18W
191.	Windy Day	SWSE 3, 47N, 17W
192.	Worcester	SENE 24, 48N, 18W
193.	Wright Mines	SWSW 27, 48N, 17W
194.	Yellow Bird	SENE 13, 47N, 20W

<u>NO.</u>	<u>NAME</u>	<u>LOCATION</u>
195.	Yellow Jacket	ESE 33, 48N, 17W
196.	Yip Yip	NWSW 1, 46N, 20W
197.	Yucca	SESW 31, 47N, 19W
198.	Zebra	SNE 31, 46N, 17W

SAN MIGUEL COUNTY

1.	Bachelor	WSE 15, 45N, 18W
2.	Bald Eagle	CNW 29, 44N, 16W
3.	Bean No. 4	NWNW 4, 43N, 19W
4.	Bean Patch	WNE 5, 43N, 19W
5.	Bessie	NWSW 20, 43N, 18W
6.	Betty Ruth	NWNW 33, 43N, 18W
7.	Big Chief	NESE 29, 43N, 18W
8.	Big Chief	NWNW 34, 44N, 17W
9.	Black Prince	WSW 18, 45N, 18W
10.	Brown Mule	NWNW 28, 44N, 17W
11.	Buckhorn	NESW 30, 44N, 19W
12.	Buckhorn	CNE 34, 43N, 18W
13.	Buckhorn No. 2	SENE 34, 43N, 18W
14.	Bull Snake	NN 12, 42N, 18W
15.	Burro No. 3	NWSE 30, 44N, 18W
16.	Burro No. 5	NESE 30, 44N, 18W
17.	Canary	SENE 1, 42N, 18W
18.	Charles T	NESW 10, 43N, 19W
19.	Chilli No. 5	NSE 26, 45N, 18W
20.	Chipmunk	ENW 22, 45N, 19W
21.	Clear View No. 2	SWSE 6, 42N, 17W
22.	Cliffdweller No. 1	SWSE 5, 44N, 17W
23.	Colorado Cat	NESW 15, 44N, 19W
24.	Curtis	SENE 28, 43N, 18W
25.	Depression	NESW 29, 43N, 18W
26.	Doremo No. 1	NENE 2, 42N, 20W
27.	Edna Mae	SESE 22, 45N, 18W
28.	Effie B.	NSE 18, 43N, 18W
29.	Empire Group	NENW 12, 44N, 20W
30.	Faultless No. 1	CNW 19, 45N, 18W
31.	Fervaite	NWSE 7, 43N, 16W
32.	Frankie	SWNW 16, 43N, 19W
33.	Full Moon	NWSE 5, 43N, 18W
34.	Full Moon No. 1	SWSE 5, 43N, 18W
35.	Full Moon No. 4	NESE 8, 43N, 18W
36.	Georgto	SNW 30, 44N, 18W
37.	Giant	CNE 24, 45N, 19W
38.	Groundhog	ENE 21, 45N, 18W
39.	Happy Jack	SESE 36, 45N, 20W
40.	Hawk	NESW 16, 43N, 19W
41.	Horse Shoe No. 4	SENE 6, 42N, 17W
42.	Horse Shoe No. 6	NESE 6, 42N, 17W
43.	Horse Shoe No. 7	CSE 6, 42N, 17W
44.	Jupiter	NENW 32, 43N, 18W
45.	Katie	NSE 13, 43N, 19W
46.	Keystone	CNE 14, 43N, 19W
47.	La Salle No. 1	SWNE 30, 44N, 19W
48.	Little Helen	NNW 18, 43N, 18W
49.	Little Roy	NNE 28, 43N, 18W
50.	Long Ridge	WSW 14, 44N, 17W
51.	Lookout	CNE 36, 45N, 18W

<u>NO.</u>	<u>NAME</u>	<u>LOCATION</u>	<u>NO.</u>	<u>NAME</u>	<u>LOCATION</u>
52.	Lookout	SSW 23, 44N, 19W	80.	Queen of Spades	WNW 18, 43N, 18W
53.	Lost	ENW 35, 45N, 19W	81.	Radium No. 1	NNW 33, 44N, 19W
54.	Lucky Day	SESW 13, 43N, 19W	82.	Radium No. 12	SESW 4, 43N, 19W
55.	Magpie	CSE 10, 44N, 18W	83.	Rambler	CNW 9, 44N, 17W
56.	Mame	SNE 32, 43N, 18W	84.	Red Top	SESW 31, 43N, 17W
57.	Margaret C.	NWNE 23, 44N, 17W	85.	Rim	SWNW 1, 42N, 18W
58.	May Flower	NENE 32, 44N, 19W	86.	Rosa L	SWNW 15, 43N, 18W
59.	Merchantile	NWSE 18, 43N, 19W	87.	Roy Lee	SWNW 35, 43N, 18W
60.	Mesa No. 2	SESW 18, 45N, 18W	88.	San Miguel	SNE 8, 43N, 19W
61.	Mexico	WSW 25, 45N, 18W	89.	Sarah Ellen	SNW 26, 43N, 18W
62.	Middle	SWNE 31, 44N, 18W	90.	State Line	SESW 23, 44N, 20W
63.	Midnight	NENE 27, 44N, 19W	91.	Star	SESW 13, 43N, 19W
64.	Mint No. 1	SENE 35, 45N, 20W	92.	Star	SESE 30, 43N, 18W
65.	Mint No. 13	SWSE 36, 45N, 20W	93.	Strawberry Roan	CNW 32, 43N, 19W
66.	Moqui Jug	SESW 29, 43N, 18W	94.	Sunday	SESW 29, 43N, 18W
67.	Mucho Grande	NNE 1, 42N, 18W	95.	Sunday	SESW 23, 45N, 19W
68.	Mule Shoe No. 6	SESW 23, 43N, 18W	96.	Sunrise	SESE 5, 43N, 19W
69.	Mystery	WSW 26, 43N, 18W	97.	Sunshine	NESW 34, 44N, 17W
70.	New Moon	SWNW 19, 45N, 18W	98.	Uncle Sam	SWSE 10, 44N, 18W
71.	Nigger Head	SNW 36, 44N, 20W	99.	Uncle Sam	NENW 6, 42N, 17W
72.	Norma Jean	NWNW 28, 43N, 18W	100.	Valley View	ESW 33, 45N, 18W
73.	Norma Jean No. 2	ENE 29, 43N, 18W	101.	Vanadium	NESW 14, 44N, 17W
74.	Norther No. 6	SESW 22, 44N, 19W	102.	Veta Glad	NWNW 30, 44N, 18W
75.	Parrot No. 2	NENE 34, 43N, 18W	103.	Victor	ENW 7, 43N, 16W
76.	Pay Streak	NWSW 29, 43N, 18W	104.	Virginia	CNW 19, 43N, 18W
77.	Penigal	NWSE 14, 43N, 19W	105.	Wally No. 1	SESW 23, 43N, 18W
78.	Pinto No. 1	SWSE 30, 44N, 19W	106.	Yellow Girl	NENE 13, 44N, 20W
79.	Pitch Fork	NWSE 33, 44N, 16W			

## PLANTS AND MILLS

<u>COUNTY</u>	<u>NAME</u>	<u>OPERATOR</u>	<u>LOCATION</u>	<u>EMPL.</u>
Fremont	Cotter Mill	Cotter Corp. P.O. Box 751 Canon City 81212	CNW 16,19S,70W	104 U
Garfield	Rifle Mill	Union Carbide-Metals Div. P.O. Box 1049 Grand Junction 81501	SWNW 18,6S,93W	39 V
Mesa	Cotter Crushing & Sampling Plant	Cotter Corp. 1129 Colo. Ave. Grand Junction 81501	NWNE 33,12S,99W	-- U/V
Moffat	Maybell Plant	Union Carbide-Metals Div. P.O. Box 66 Maybell 81640	SE 13,7N,95W	15 U
Montrose	Durita Develop- ment Leach Operation	Durita Development Corp. Div. Ranchers Explor. & Development Corp. P.O. Box 466 Naturita 81422	CN 34,46N,16W	70 U/V
Montrose	Ore Buying Station	General Electric Co. P.O. Box 467 Naturita 81422	NWSW 14,46N,16W	11 U/V
Montrose	Uravan Mill	Union Carbide-Metals Div. Uravan 81436	NWSW 34,48N,17W	180 U/V

## CONTROLLERS

Andrews Mining Company  
P.O. Box 99  
Nucla, CO 81424  
864-7887

Atlanta Mining Company  
Box 86  
Menomonee, WI 53051

Atlas Minerals-Division of  
Atlas Corporation  
Mr. Thomas L. Wilson,  
Manager of Mines  
P.O. Box 1207  
Moab, UT 84532

Benson Mining and Machinery  
301 Main St.  
Canon City, CO 81212

Doris Binder  
Mr. Russell Neesham  
Box 2  
Naturita, CO 81422  
864-7829

Marion Birch-Birch Mining Company  
P.O. Box 703  
Moab, UT 84532

Brooks Minerals, Inc.  
Mr. Fred Brooks, President  
8700 West 14th Ave.  
Lakewood, CO 80215  
232-5955

C. W. Bunker  
P.O. Box 369  
Norwood, CO 81423  
327-4545

Liz Bunker  
Box 277  
Nucla, CO 81424

A. M. Carrico  
Whitewater, CO 81527  
227-3831

C & D Exploration  
P.O. Box 8  
Naturita, CO 81422  
865-2810

C & H Mining Company  
P.O. Box 303  
Paradox, CO 81429

Ray Church  
P.O. Box 2356  
Grand Junction, CO 81501  
243-4679

Cleghorn & Washburn Mining Company  
Mr. Douglas Cleghorn, Mr. Lark Washburn  
1129 Colorado Ave.  
Grand Junction, CO 81501  
243-6784

Cotter Corporation  
Mr. Erik Bruner,  
Assistant Vice President  
P.O. Box 352  
Golden, CO 80401  
232-8218

Cotter Corporation  
Mr. James Chambers, Mine Superintendent  
1129 Colorado Ave.  
Grand Junction, CO 81501  
245-3330

Cougar Ventures and Ryan Ltd.  
c/o Mr. Perry Flanigan  
542 Main Street  
Montrose, CO 81401  
249-9691

Cyprus Mines Corporation  
Mr. Gene Ealy, Vice President  
1790 30th St., Suite 232  
Boulder, CO 80301  
447-0781

Dawson Mining Company & Truchas, Ltd.  
Mr. W. S. Dawson, Partner  
P.O. Box 2550  
Grand Junction, CO 81501  
242-9465

Dynove, Ltd.  
Mr. William E. Foster, General Partner  
Valley Federal Plaza  
Grand Junction, CO 81501

Energy Fuels Nuclear, Inc.  
Mr. I. W. Mathisen, Vice President  
1515 Arapahoe, Suite 445  
3 Park Central  
Denver, CO 80202  
623-8317

Energy Reserves Group, Inc.  
Mr. Robert A. Brooks  
Suite 3200  
First of Denver Plaza  
633 17th St.  
Denver, CO 80202  
572-3323

Herbert Foster  
2950 A 1/2 Road  
Grand Junction, CO 81501  
242-6828

Ralph Foster & Sons  
Mr. Robert Foster, General Partner  
2950 A 1/2 Road  
Grand Junction, CO 81501  
242-4669

Oliver Flury  
Rt. 2, Box 120A  
Montrose, CO 81401  
249-7936

Gates and Fox Company, Inc.  
Mr. Stanley Mayer, Agent  
1615 North 18th St.  
Grand Junction, CO 81501  
242-6828

Gold Bar Resources  
645 E. Center  
Springville, UT 84663

Graham Mining  
Mr. Robert Graham  
P.O. Box 141  
Gateway, CO 81522  
931-2493

Glen and Michael Greager  
P.O. Box 12  
Redvale, CO 81431

Hannert Mining  
Mr. William Hannert  
General Delivery  
Orangeville, UT 84537

H. H. Harp  
P.O. Box 654  
Meeker, CO 81641  
878-5955

Adare Hill  
Uravan, CO 81436

Homestake Mining Company  
7625 W. 5th Ave.  
Lakewood, CO 80226  
238-1241

Hubbard Mining Company  
P.O. Box 242  
Gateway, CO 81522

Ince Minerals Corporation  
Mr. Carson Ince, Partner  
P.O. Box 240  
Gateway, CO 81522

J & J Mining & Exploration  
Naturita, CO 81422

E. L. Johannsen Mining Company  
P.O. Box 117  
Nucla, CO 81424  
864-7342

Keogh & Shumway  
Mr. Bob Shumway  
Spanish Trail Dr.  
Moab, UT 84532

Micro Copper Corp.  
Uranium Bldg.  
Moab, UT 84532

Jack Milling  
Egnar, CO 81325

Monogram Mining Company  
P.O. Box 65  
Norwood, CO 81423

Vernon C. Moores and Sons  
Star Route No. 4  
Gateway, CO 81522  
931-2802

Native Reserves, Ltd.  
Mr. Leland Bennett  
Redvale, CO 81431  
327-4280

Russell D. Neesham  
P.O. Box 314  
Nucla, CO 81424  
864-7829

Oliver & Buss  
Mr. Dwight Oliver  
P.O. Box 207



Norwood, CO 81423  
327-4247

Charles Pickens  
Route 2  
P.O. Box 22  
Mancos, CO 81328

Pioneer Uravan  
Mr. Russell Cutter, Vice President  
P.O. Box 2065  
Grand Junction, CO 81501  
245-0197

Rajah Ventures, Ltd.  
Mr. Charles Woodard, General Partner  
2721 North 12th St., Suite 30  
Grand Junction, CO 81501  
243-1177

Ryan Ltd. - see Cougar Ventures

S & M Explorations  
P.O. Box 211  
Gateway, CO 81522

St. Jude Mining Company  
Mr. W. S. Dawson  
P.O. Box 2550  
Grand Junction, CO 81501  
242-9465

Seymour & Meyers  
c/o Tom Meyers  
Gateway, CO 81522

Shiprock Limited  
Mr. W. S. Dawson  
P.O. Box 2550  
Grand Junction, CO 81501  
242-9465

C. L. Stewart  
La Sal, UT 84530

Strategic Minerals Exploration Company  
Mr. John I. Schumacher  
608 Viewpoint Dr.  
Grand Junction, CO 81501  
243-2351

Sutherland Mining Company  
P.O. Box 335  
Naturita, CO 81422

Taminco, Inc.  
Mr. Robert Taylor  
415 Walnut Avenue  
Grand Junction, CO 81501  
243-0585

Jack Thompson  
Rt. 1, P.O. Box 22  
Cedaredge, CO 81413

Trio Industries, Inc.  
Mr. Jerry W. Uhrlaub  
315 N. 3rd  
Grand Junction, CO 81501  
245-4349

Union Carbide Corporation-Metals  
Division  
Mr. Justin Kirk, Manager of  
Administration  
P.O. Box 1049  
Grand Junction, CO 81501  
245-3700

Union Carbide Corporation-Metals  
Division  
P.O. Box 66  
Maybell, CO 81640

U.S. Bureau of Mines  
Mr. Mike Hill  
Special Studies Station  
P.O. Box 71  
Uravan, CO 80436  
862-7234

Williams, Inc.  
Mr. Floyd Williams  
Naturita, CO 81422  
865-2296

W. Winfield-W. McCormick  
#5 Rosalie Ct.  
Moab, UT 84532

Woodbury Mining  
Naturita, CO 81422

Wyoming Mineral Corporation  
Exploration and Mining Div.  
Mr. Fred C. Hohne, Manager of Mining  
3900 S. Wadsworth Ave.  
Lakewood, CO 80235  
988-8530

EXPLANATION

- ▲ MILLS
  - ▲ MINING STATION, CRUSHING & SAMPLING PLANT, & NEAR LEACH OPERATIONS
  - ACTIVE MINES \* (Numbers keyed to Directory)
  - INACTIVE MINES (Numbers keyed to Directory)
  - OCCURRENCES +
  - REC WITHDRAWAL BLOCKS
- \* DEFINITION OF ACTIVE MINES - Classified as those having employed miners either for production or development from Jan. 1, 1976 to Aug. 1, 1978. Uranium mines, particularly in the uranium districts, is often intermittent and many of the mines listed as active may not be currently producing.
- + REFERS TO CGS BULLETIN 40

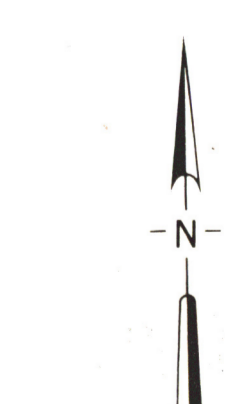
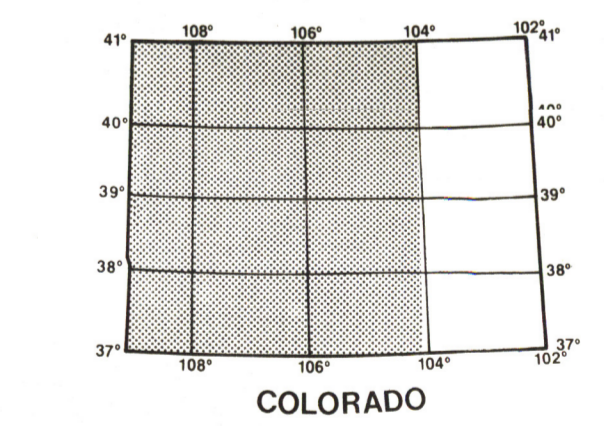
REFERENCES

- UNION CARBIDE CORPORATION
- REC CLAIMS FILE
- COLORADO DIVISION OF MINES ANNUAL REPORTS
- MSA INSPECTION REPORTS
- COLORADO GEOLOGICAL SURVEY, BULLETIN 40, RADIOACTIVE MINERAL OCCURRENCES OF COLORADO

Drafting by: Susan J. Soukup

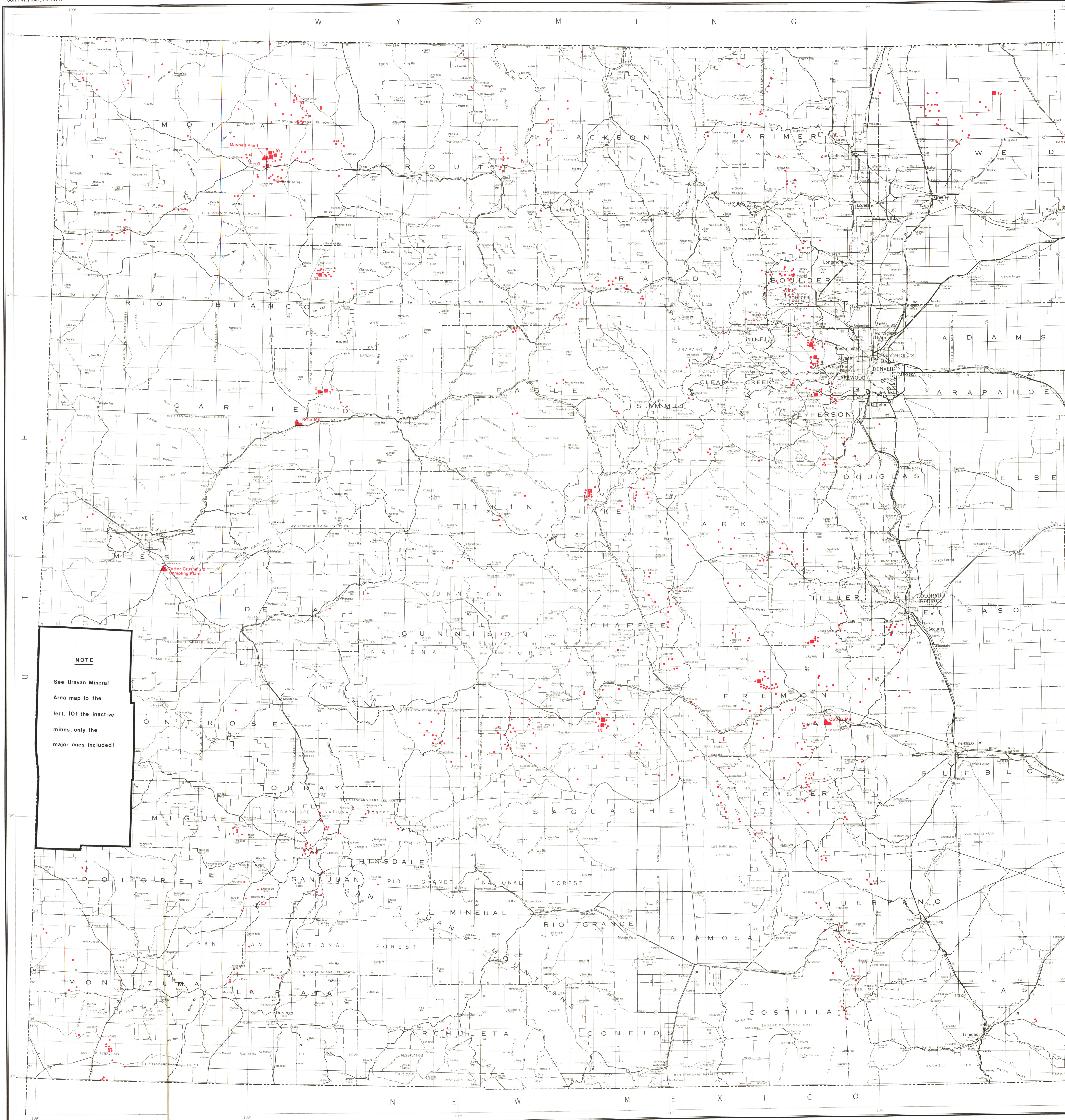
Partially funded by  
Governor's Socio-Economic Impact Office

INDEX



PRICE \$4.00

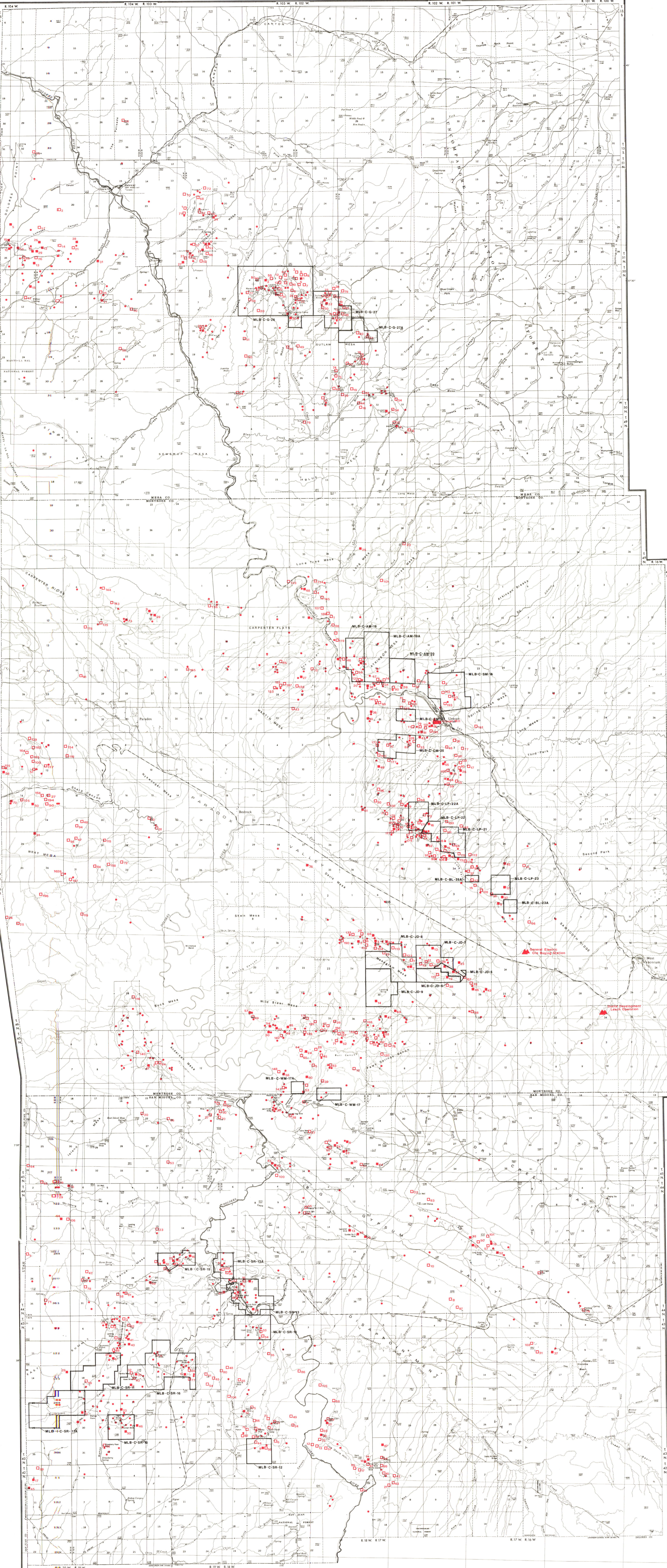
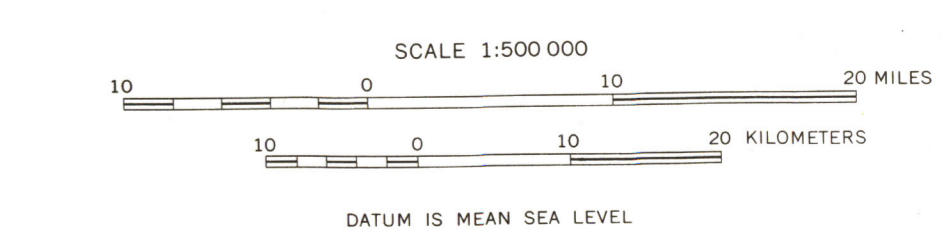
1978



**NOTE**  
See Uranium Mineral Area map to the left. (Of the inactive mines, only the major ones included)

MAP OF COLORADO URANIUM AND VANADIUM MINING AND MILLING ACTIVITIES

by James D. Collier, A. L. Hornbaker, and William L. Chenoweth



MAP OF URANIUM MINERAL AREA