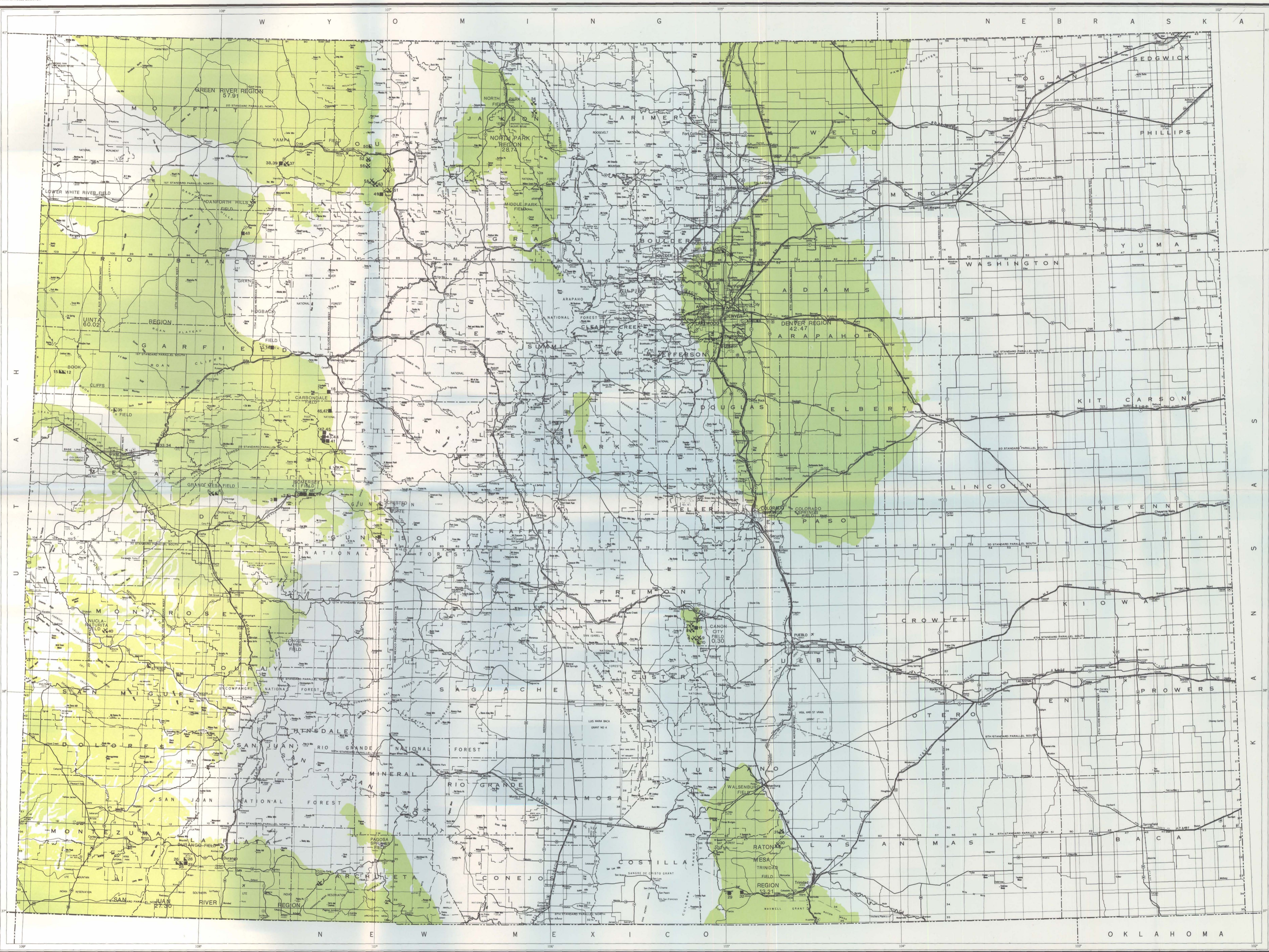


COAL MINE INFORMATION

Mine Name	Coal-bearing bed, formation/Thickness (ft)/Rank	No. employees (over 777/330/over 50/day prod./20% prod./ann. prod. to 4/1/77)
1. North Star	Unconformal, Fossiliferous (171/70)	4/20/279
2. King	Unconformal, Mesozoic (17/9)	22/11/71
3. Orchard Valley (old name)	Unconformal, Mesozoic (17/9)	30/12/11,360/13,209
4. Red Canyon No. 1 (old name No. 2)	Unconformal, Mesozoic (17/9)	1/2/0/0
5. Tomback Strip	Unconformal, Mesozoic (17/9)	0/0/0/0
6. Black Diamond Strip	Unconformal, Mesozoic (17/9)	11/2/0/4,401/7,273
7. Golden Quality No. 1	Unconformal, Mesozoic (17/9)	0/0/0/0
8. Hastings Strip	Unconformal, Mesozoic (17/9)	0/0/0/0
9. North Star	Unconformal, Mesozoic (17/9)	0/0/0/0
10. North Star	Unconformal, Mesozoic (17/9)	0/0/0/0
11. North Star	Unconformal, Mesozoic (17/9)	0/0/0/0
12. North Star	Unconformal, Mesozoic (17/9)	0/0/0/0
13. North Star	Unconformal, Mesozoic (17/9)	0/0/0/0
14. North Star	Unconformal, Mesozoic (17/9)	0/0/0/0
15. North Star	Unconformal, Mesozoic (17/9)	0/0/0/0
16. North Star	Unconformal, Mesozoic (17/9)	0/0/0/0
17. North Star	Unconformal, Mesozoic (17/9)	0/0/0/0
18. North Star	Unconformal, Mesozoic (17/9)	0/0/0/0
19. North Star	Unconformal, Mesozoic (17/9)	0/0/0/0
20. North Star	Unconformal, Mesozoic (17/9)	0/0/0/0
21. North Star	Unconformal, Mesozoic (17/9)	0/0/0/0
22. North Star	Unconformal, Mesozoic (17/9)	0/0/0/0
23. North Star	Unconformal, Mesozoic (17/9)	0/0/0/0
24. North Star	Unconformal, Mesozoic (17/9)	0/0/0/0
25. North Star	Unconformal, Mesozoic (17/9)	0/0/0/0
26. North Star	Unconformal, Mesozoic (17/9)	0/0/0/0
27. North Star	Unconformal, Mesozoic (17/9)	0/0/0/0
28. North Star	Unconformal, Mesozoic (17/9)	0/0/0/0
29. North Star	Unconformal, Mesozoic (17/9)	0/0/0/0
30. North Star	Unconformal, Mesozoic (17/9)	0/0/0/0

CGS LIBRARY



EXPLANATION

- UNITA REGION Coal region name
- 6002 Original in-place resources to 6,000 ft depth (from Hamblin, 1976, and Murray, 1976) in billions of tons
- SOMERSET FIELD Coal field name
- Approximate outline of coal-bearing region
- MINES*
 - Currently producing
 - Currently suspending
 - INDUSTRIAL MINES*
 - Currently producing
 - Currently suspending
- RAILROADS

REFERENCES

Hamblin, A.L., 1976. Coal resources of Colorado. Colorado Geol. Surv. Prof. Ser. 7, 11 p.

Jones, D.C., 1976. Active licensed coal mines of Colorado. Colorado Geol. Surv. Open File Rep. 11-100-000.

Jones, D.C., 1976. Coal mines and coal fields of Colorado. Colorado Geol. Surv. Prof. Ser. 7, 11 p., scale 1:500,000.

Jones, D.C., and Murray, D.K., 1976. Coal mines of Colorado: statistical data. Colorado Geol. Surv. Inf. Ser. 7, 27 p.

Murray, D.K., 1976. Preliminary geologic map of Colorado. U.S. Geol. Surv. Misc. Field Studies Map MF-784, scale 1:500,000.

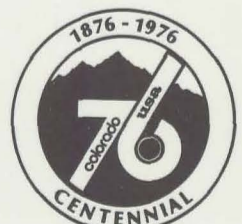
U.S. Geological Survey and Colorado Geological Survey, 1977. Energy resources map of Colorado. U.S. Geol. Surv. Misc. Geol. Inv. Map 1-100, scale 1:500,000.

SOURCE DATA

LICENSED COAL MINES IN COLORADO

By David C. Jones

1977



Drafted by Janet Schultz