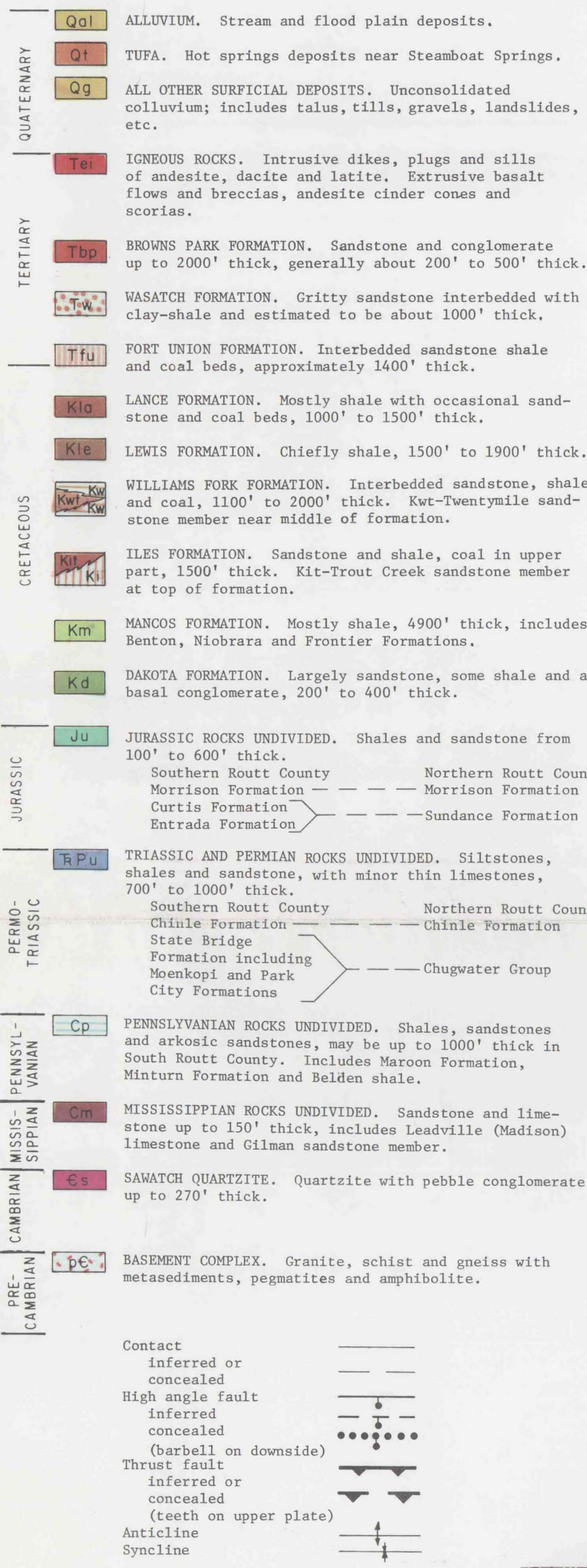


DEPARTMENT OF NATURAL RESOURCES
COLORADO GEOLOGICAL SURVEY
JOHN W. ROLD, DIRECTOR

EXPLANATION



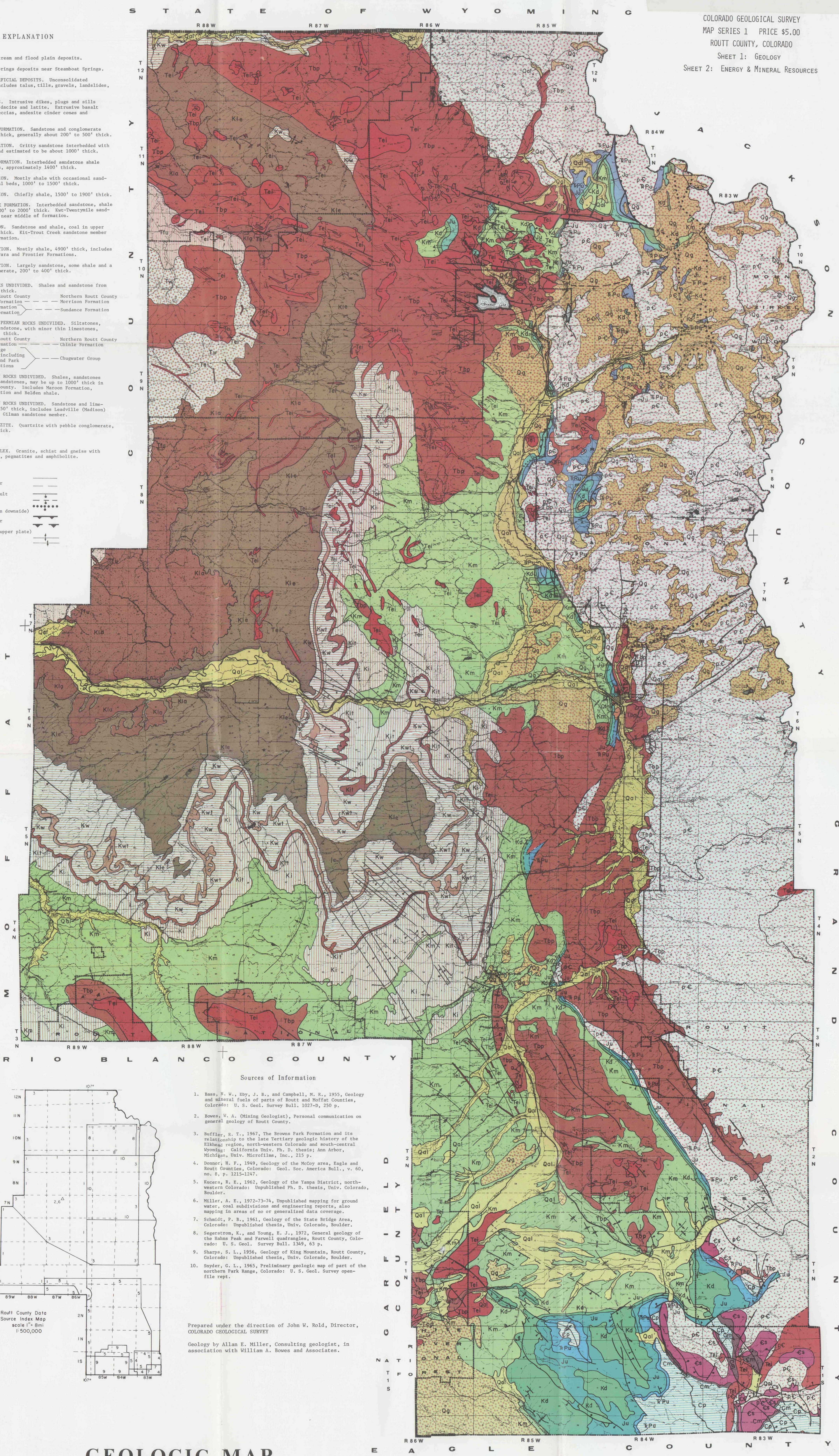
COLORADO GEOLOGICAL SURVEY

MAP SERIES 1 PRICE \$5.00

ROUTT COUNTY, COLORADO

SHEET 1: GEOLOGY

SHEET 2: ENERGY & MINERAL RESOURCES

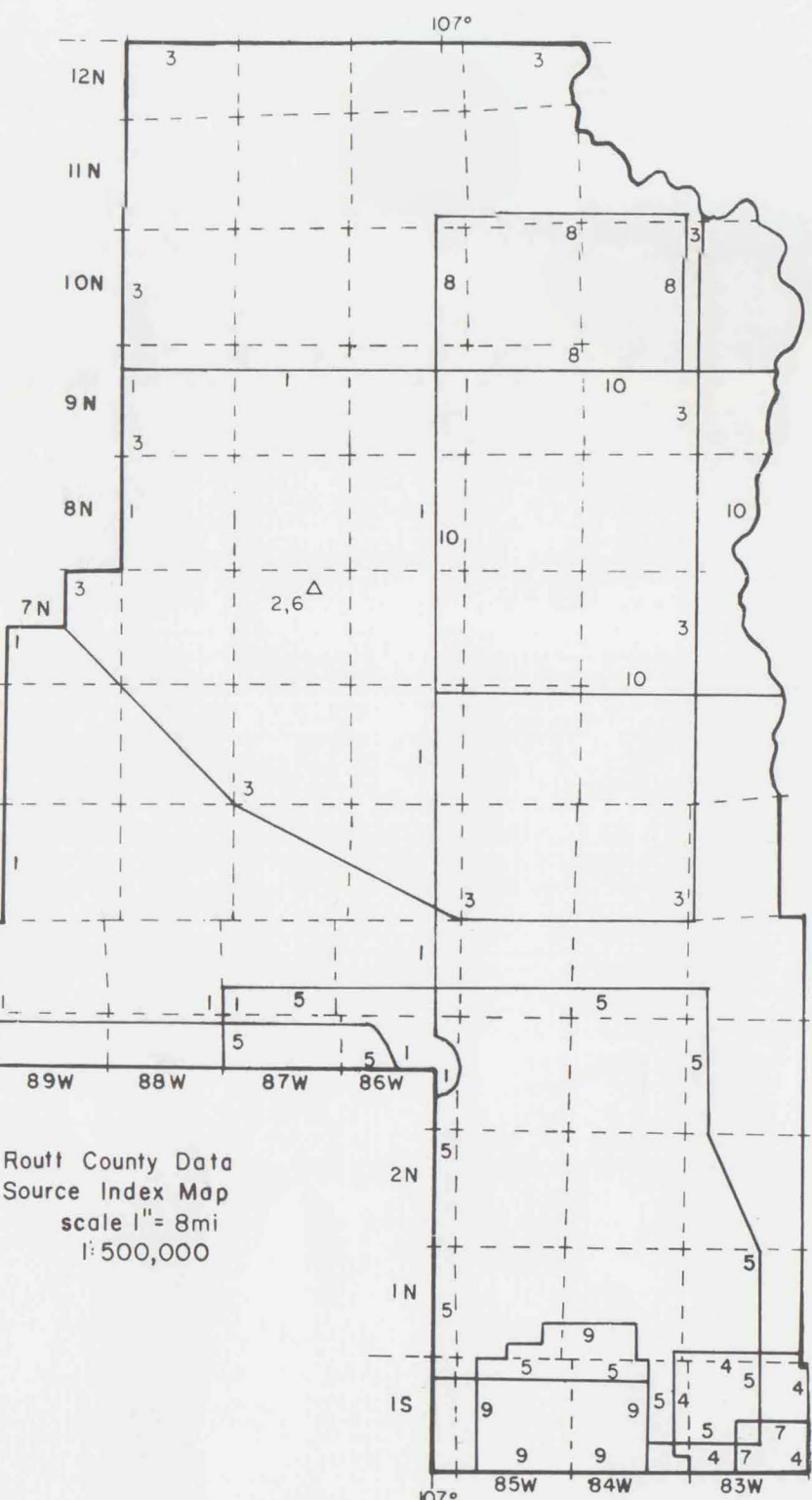


Sources of Information

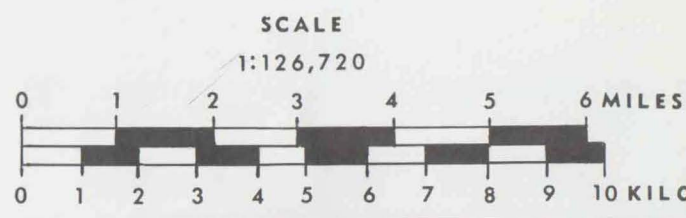
1. Bass, W. W., Eby, J. E., and Campbell, M. R., 1955, Geology and mineral fuels of parts of Routt and Moffat Counties, Colorado: U. S. Geol. Survey Bull. 1027-D, 250 p.
2. Bowers, W. A. (Mining Geologist), Personal communication on general geology of Routt County.
3. Buffler, R. T., 1967, The Browns Park Formation and its relationship to the late Tertiary geologic history of the Elkhead region, north-western Colorado and south-central Wyoming: California Univ. Ph. D. thesis; Ann Arbor, Michigan Univ. Microfilms, Inc., 215 p.
4. Donnor, H. F., 1949, Geology of the McCoy area, Eagle and Routt Counties, Colorado: Geol. Soc. America Bull., v. 60, no. 8, p. 1215-1247.
5. Kucera, R. E., 1962, Geology of the Yampa District, north-western Colorado: Unpublished Ph. D. thesis, Univ. Colorado, Boulder.
6. Miller, A. E., 1972-73-74, Unpublished mapping for ground water, coal subdivisions and engineering reports, also mapping in areas of no or generalized data coverage.
7. Schmidt, P. B., 1961, Geology of the State Bridge Area, Colorado: Unpublished thesis, Univ. Colorado, Boulder.
8. Segerstrom, K., and Young, E. J., 1972, General geology of the Hahn Peak and Farwell quadrangles, Routt County, Colorado: U. S. Geol. Survey Bull. 1349, 63 p.
9. Sharpe, S. L., 1956, Geology of King Mountain, Routt County, Colorado: Unpublished thesis, Univ. Colorado, Boulder.
10. Snyder, G. L., 1965, Preliminary geologic map of part of the northern Park Range, Colorado: U. S. Geol. Survey open-file rept.

Prepared under the direction of John W. Rold, Director, COLORADO GEOLOGICAL SURVEY

Geology by Allan E. Miller, Consulting geologist, in association with William A. Bowers and Associates.

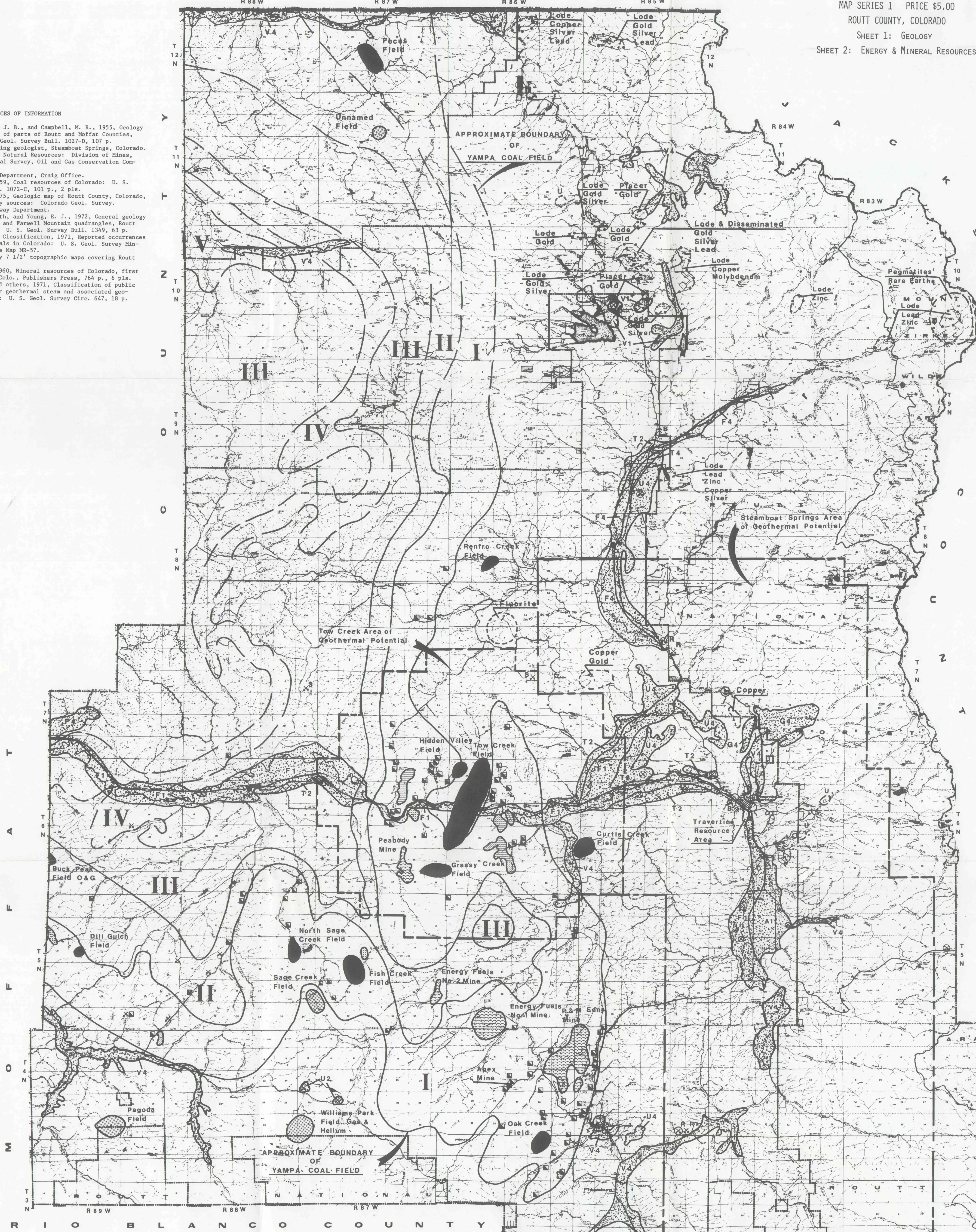


GEOLOGIC MAP
ROUTT COUNTY,
COLORADO



SOURCES OF INFORMATION

1. Bass, M. W., Eby, J. B., and Campbell, M. R., 1955, Geology and mineral fuels of parts of Routt and Moffat Counties, Colorado: U. S. Geol. Survey Bull. 1027-D, 107 p.
2. Bowers, W. A., Mining geologist, Steamboat Springs, Colorado.
3. Colorado Dept. of Natural Resources: Division of Mines, Colorado Geological Survey, Oil and Gas Conservation Commission.
4. Colorado Highway Department, Craig Office.
5. Landis, E. R., 1959, Coal resources of Colorado: U. S. Geol. Survey Bull. 1072-C, 101 p., 2 pls.
6. Miller, A. E., 1975, Geologic map of Routt County, Colorado, compiled from many sources: Colorado Geol. Survey.
7. Routt County Highway Department.
8. Segerstrom, Kenneth, and Young, E. J., 1972, General geology of the Hahn's Peak and Farwell Mountain quadrangles, Routt County, Colorado: U. S. Geol. Survey Bull. 1349, 63 p.
9. Branch of Mineral Classification, 1971, Reported occurrences of selected minerals in Colorado: U. S. Geol. Survey Mineral Inv. Resource Map MS-57.
10. U. S. Geol. Survey 7 1/2' topographic maps covering Routt County.
11. Del Rio, S. M., 1960, Mineral resources of Colorado, first sequel: Denver, Colo., Publishers Press, 764 p., 6 pls.
12. Godwin, L. H., and others, 1971, Classification of public lands valuable for geothermal steam and associated geothermal resources: U. S. Geol. Survey Circ. 647, 18 p.



EXPLANATION

ENERGY RESOURCES

COAL

- I Area containing bituminous coal (1 or more beds) with less than 1000 ft. of overburden. Main coal beds in this category: Lennox, Wadsworth, Wolf Creek, Middle coal group in middle of Williams Fork Formation, Lower coal group in lies Formation.
- II Area containing subbituminous coal with less than 1000 ft. of overburden underlain by bituminous coal (above coals). Main coal beds in this category: Beds K thru S, Dry Cr. Bed, Carey Bed, Williams Fork, Fish Cr. Bed.
- III Area containing all above coals with more than 1000 ft. overburden; includes areas of Lance coals with over 1000 ft. overburden.
- IV Outcrop zone of Upper Cretaceous subbituminous coals with probable overburden of less than 1000 ft.
- V Area of outcropping Tertiary rocks containing subbituminous coal with probable overburden of less than 1000 ft.

- Active underground coal mine
- Inactive or abandoned underground coal mine
- Active surface coal mine
- Inactive or abandoned surface coal mine
- OIL AND GAS
- Oil field
- Natural gas field
- GEOTHERMAL
- Boundary of area of geothermal potential as defined by U. S. G. S.
- URANIUM
- Uranium occurrence area
- Hot spring location

MINERAL RESOURCES

- Lode Gold
- Fluorite
- Volcanics
- Location, type and name of potential metal/nonmetal resource
- Location and name of potential economic mineral resource
- Aggregate landform boundary - solid where known, dashed where inferred.
- Landform Units
- F - Flood plain
- T - Stream terrace
- V - Valley fill
- U - Upland deposit
- A - Alluvial fan
- G - Glacial deposit
- Aggregate Classification
- 1 - Gravel - relatively clean and sound.
- 2 - Gravel - significant fines, decomposed rock or CaCO₃.
- 3 - Sand.
- 4 - Unevaluated, but possible aggregate resource.
- NOTE: Circled pits and quarries are active.

ENERGY and MINERAL
RESOURCES MAP
ROUTT COUNTY, COLORADO

