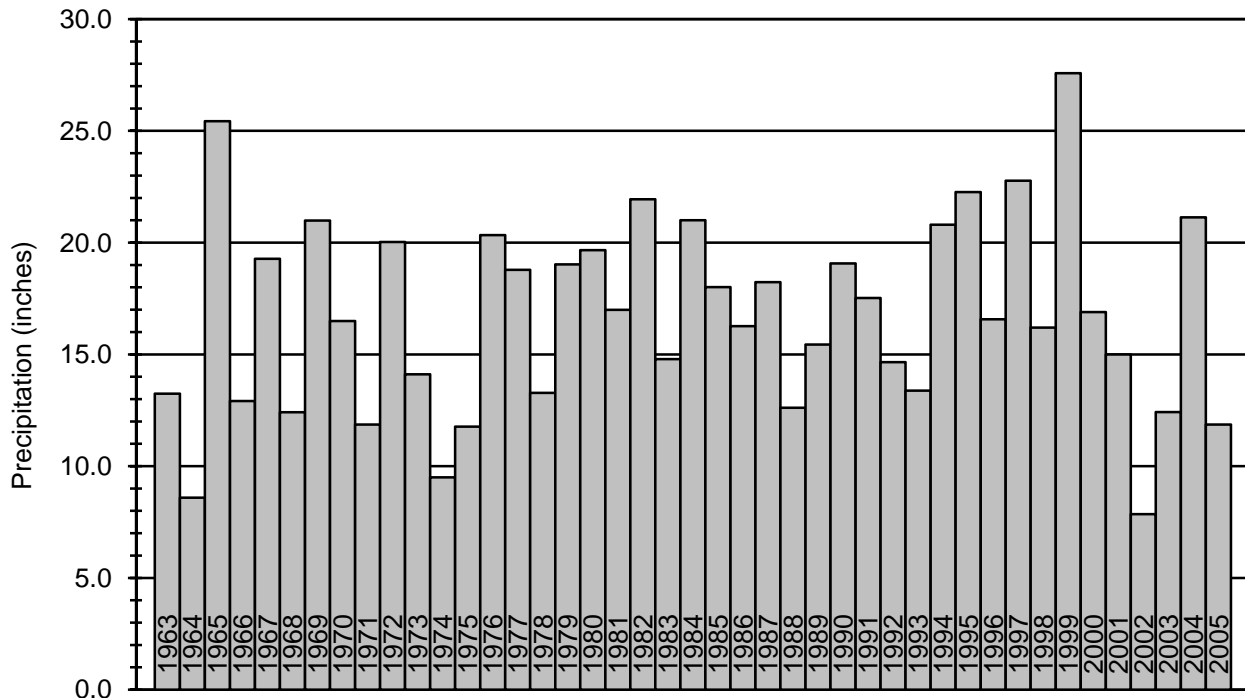


Figure 1 – Location of the Upper Black Squirrel Creek Designated Ground Water Basin and Study Area

Annual Precipitation at Colorado Springs Municipal Airport 1963-2005



Mean Monthly Precipitation Colorado Springs Municipal Airport 1963-2005

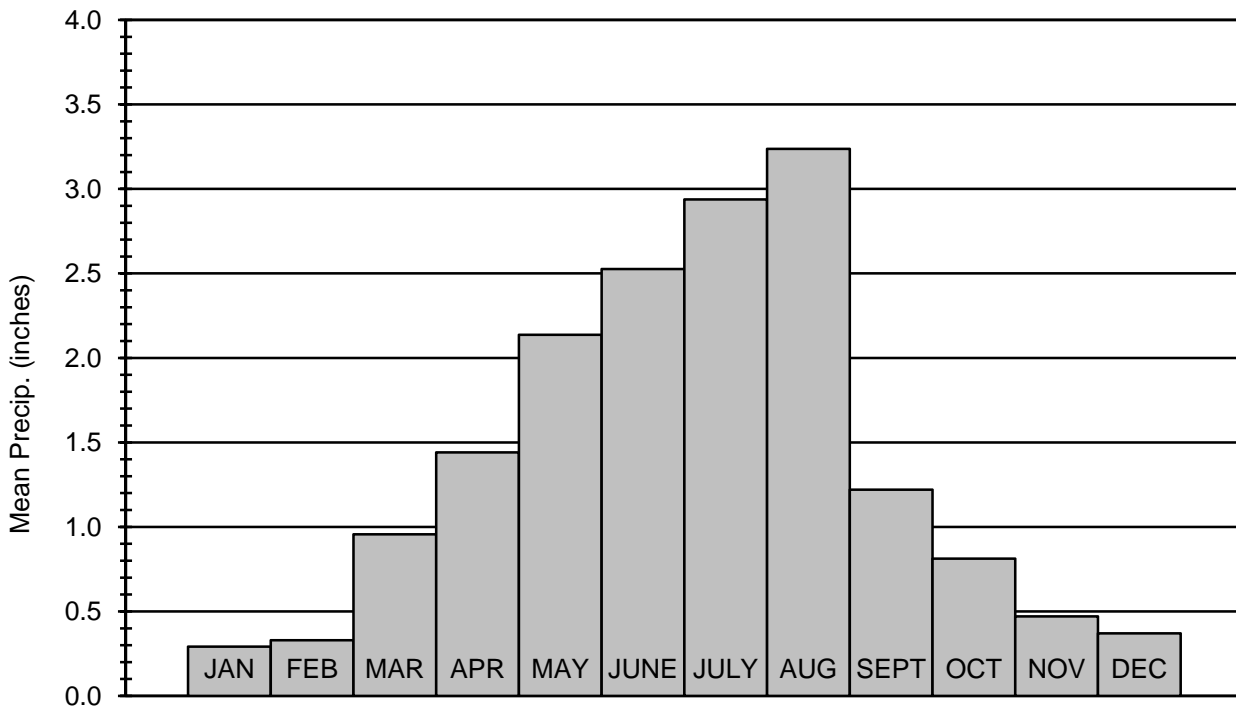
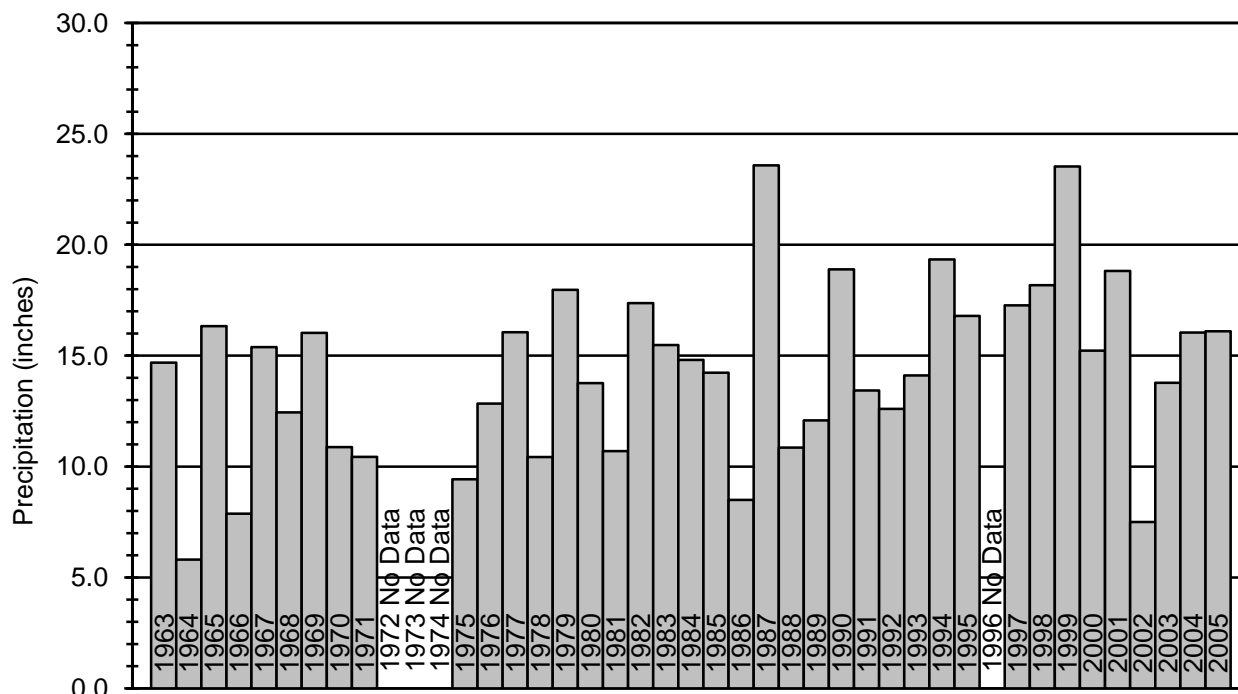


Figure 2 – Annual (A) and mean monthly (B) precipitation at Colorado Springs Municipal Airport, 1963-2005.

Annual Precipitation at Rush 1963-2005



Mean Monthly Precipitation at Rush 1963-2005

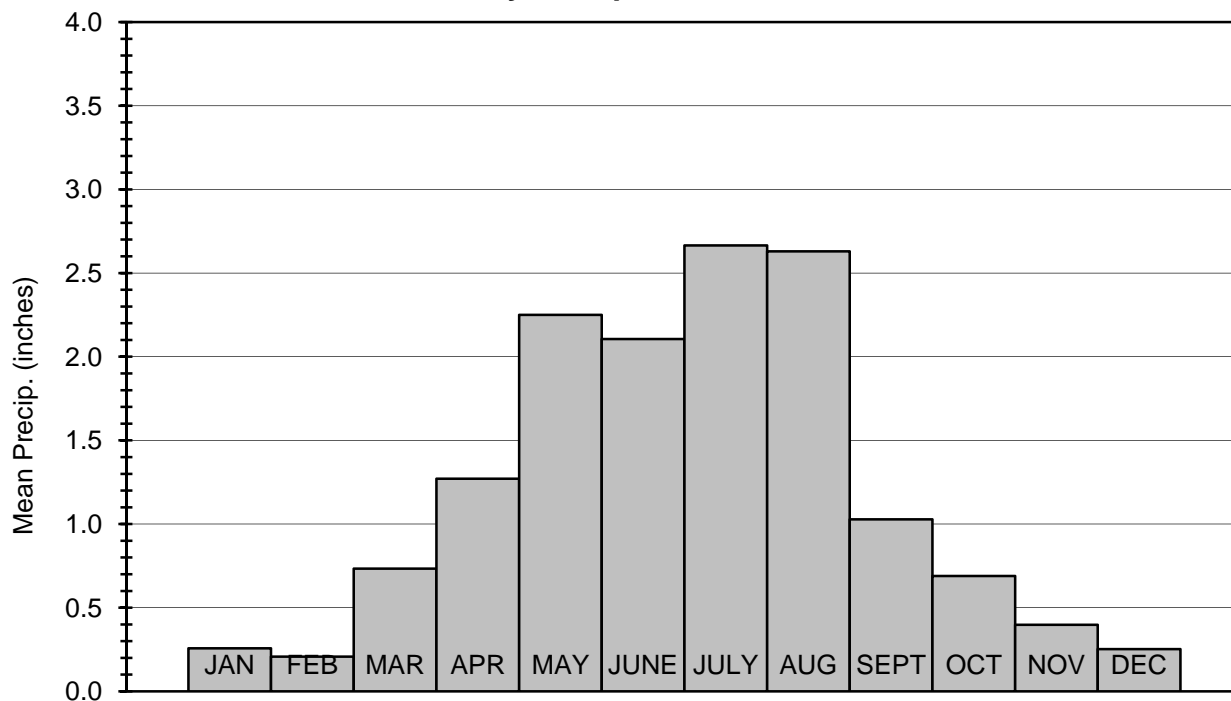


Figure 3 – Annual (A) and mean monthly (B) precipitation at Rush, 1963-2005.

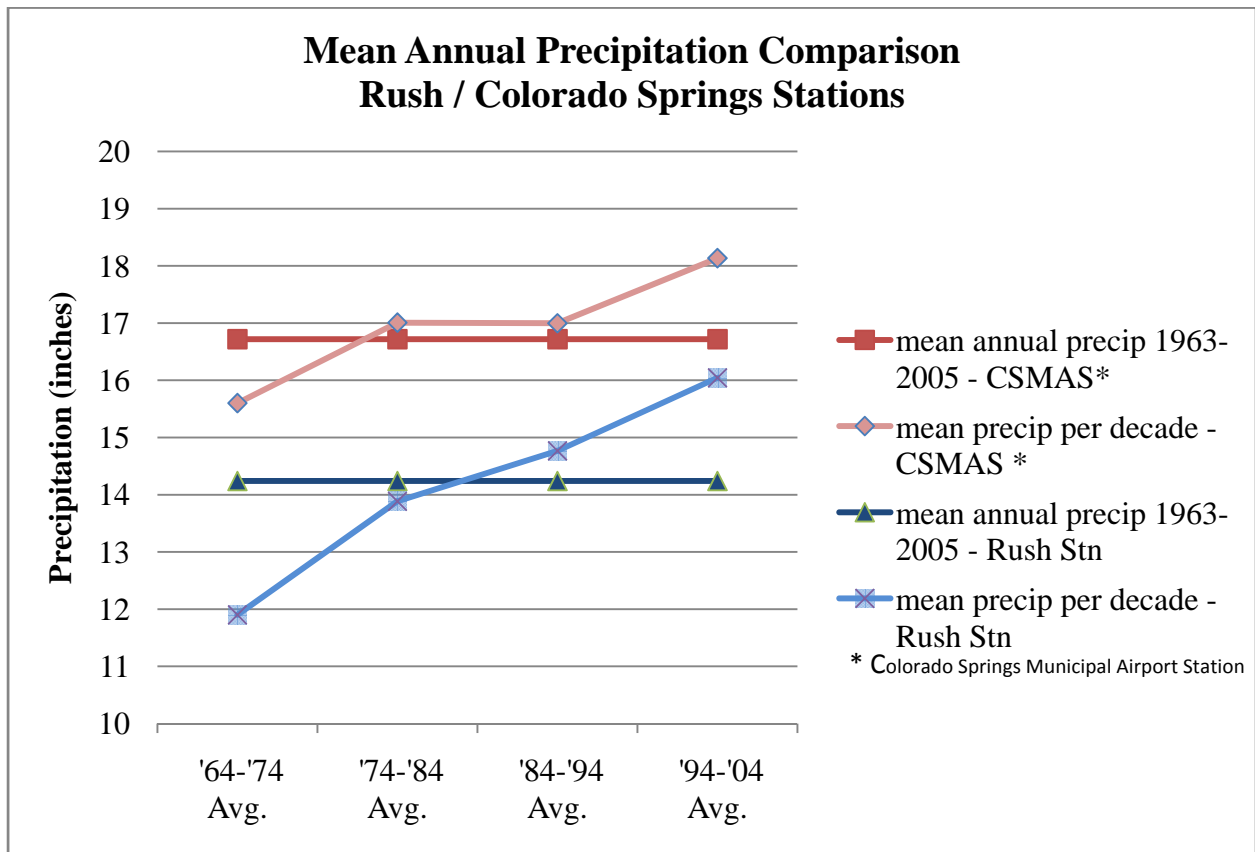


Figure 4 – Mean annual precipitation comparison from 1964-2004

Upper Black Squirrel Monthly Monitoring Network

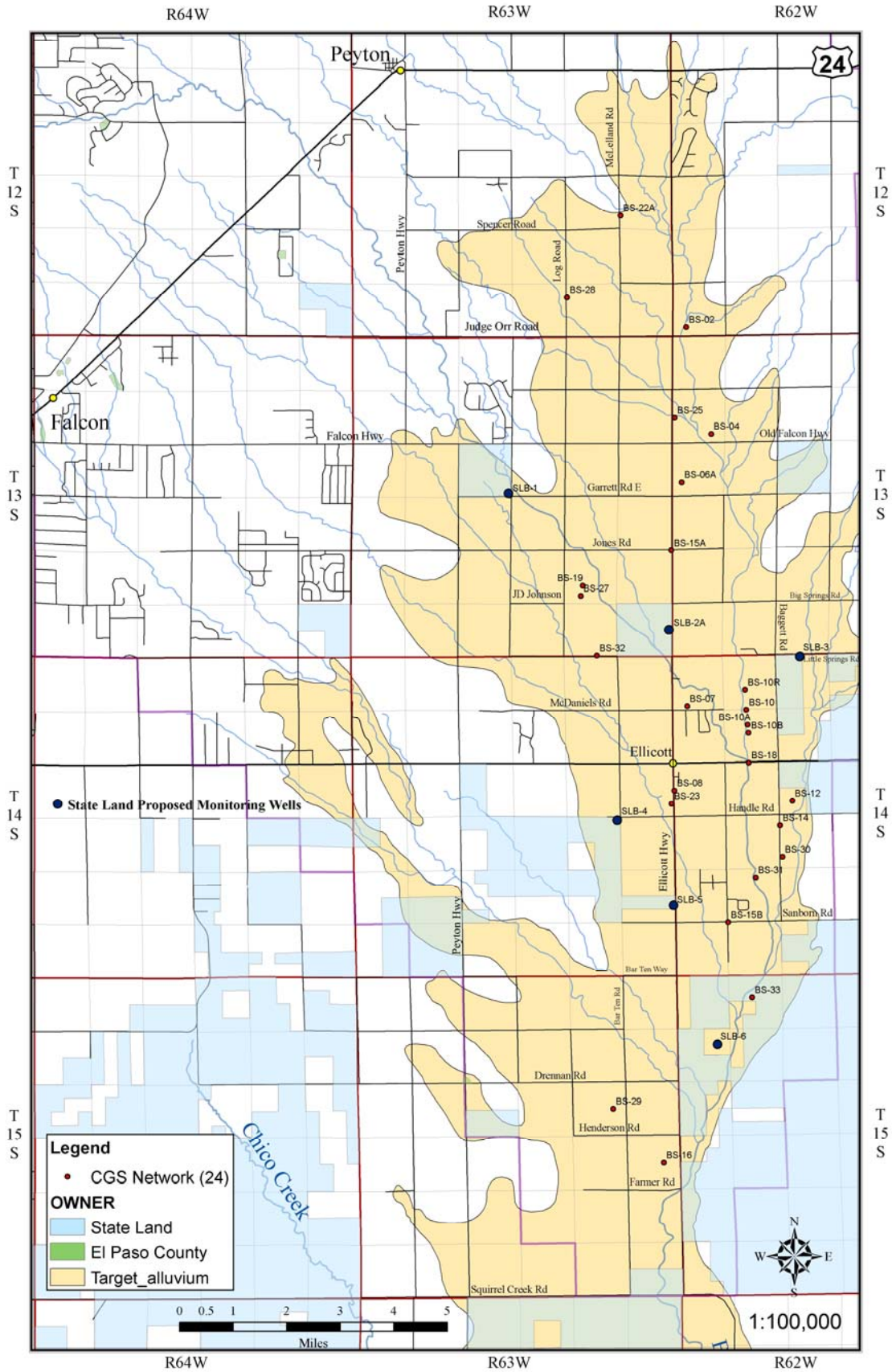


Figure 5 – Location of SLB wells

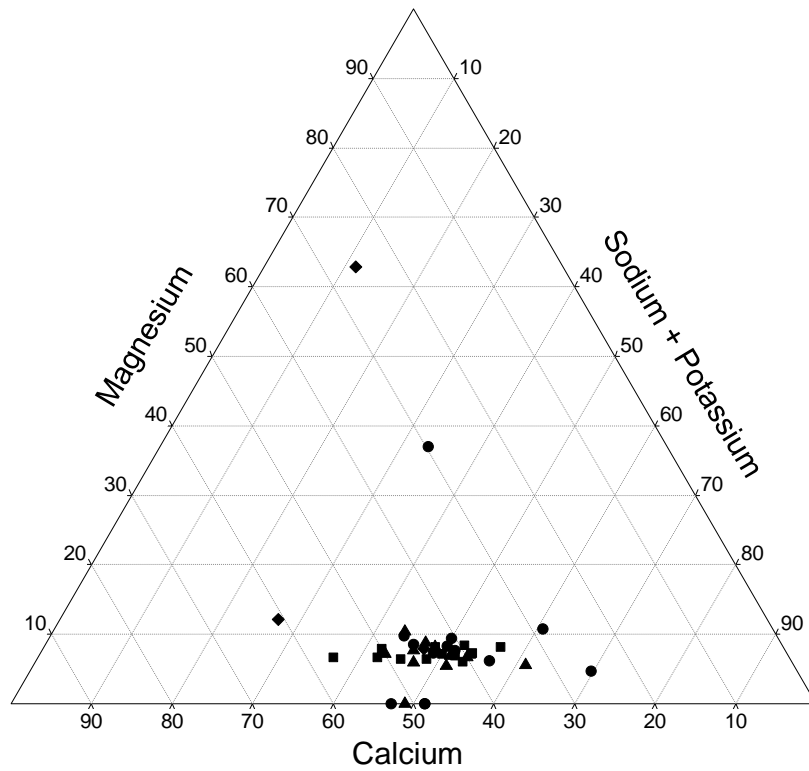
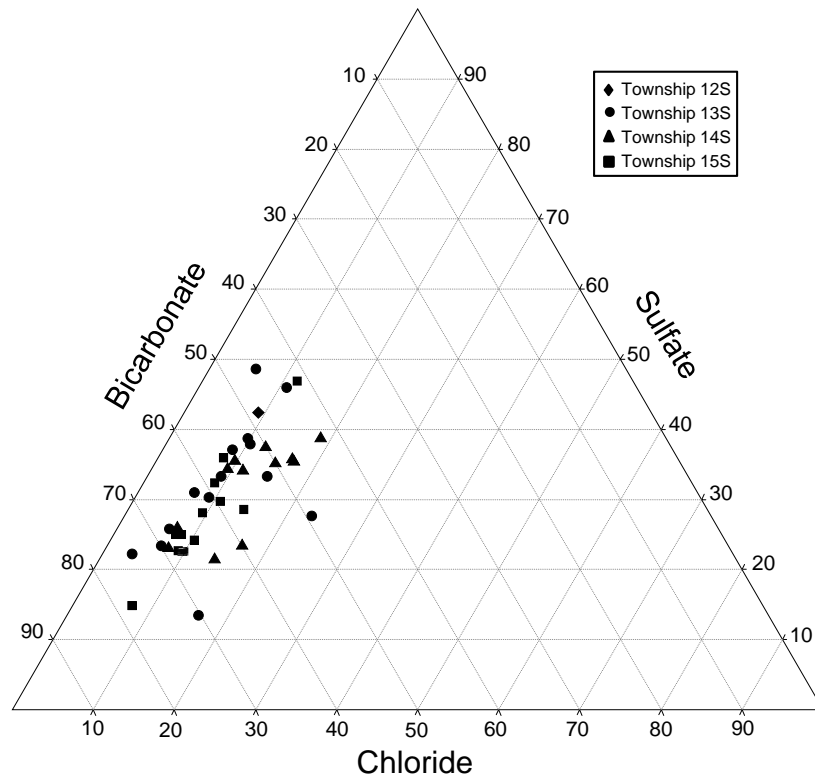


Figure 6 - Relative proportions of dissolved anions and cations in water from the alluvial aquifer in the Upper Black Squirrel Creek Basin.
 (Units along axes are percentage of total milliequivalents per liter)

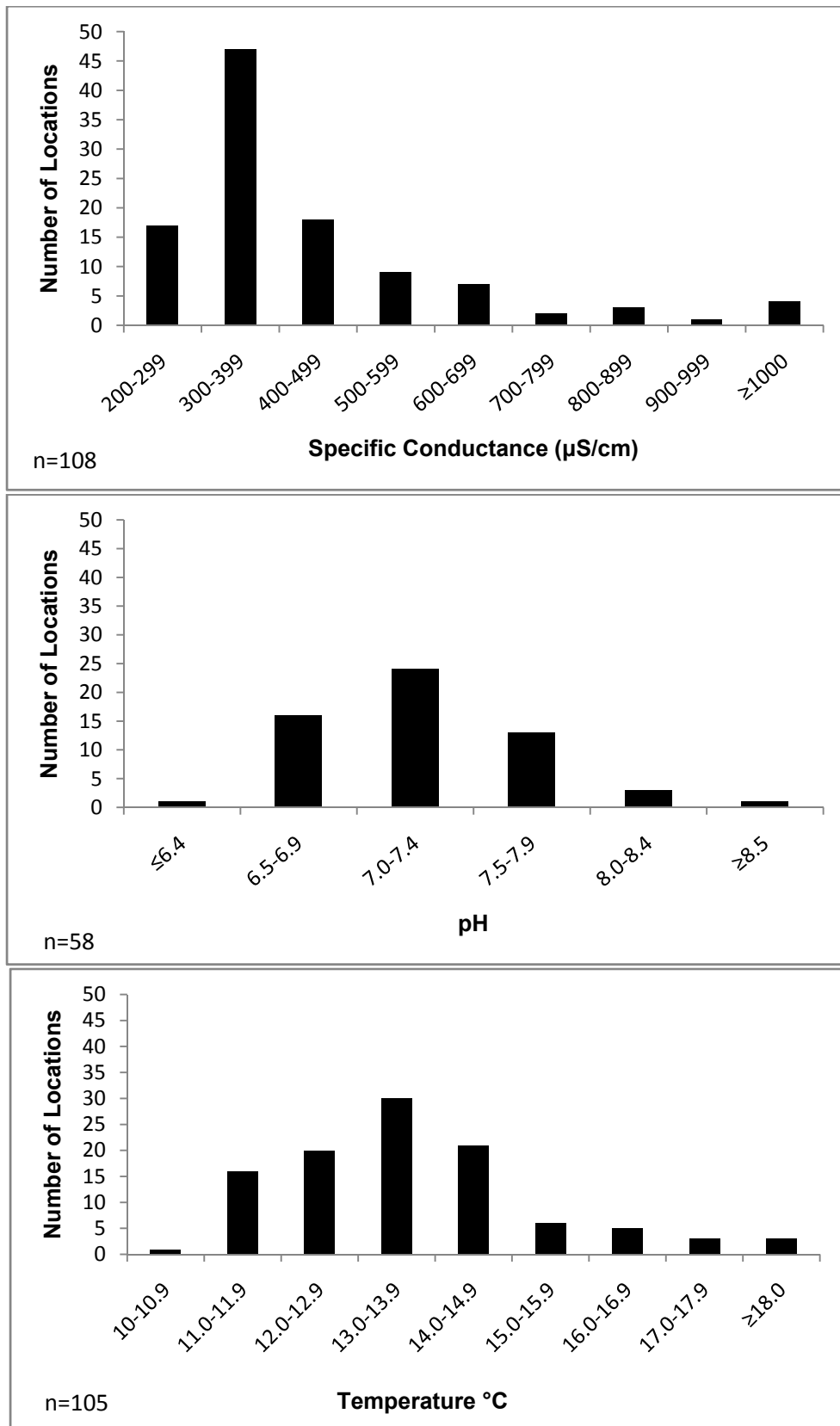


Figure 7. Frequency distribution histograms of physical characteristics of water samples from wells in the alluvial aquifer in the Upper Black Squirrel Creek Basin.