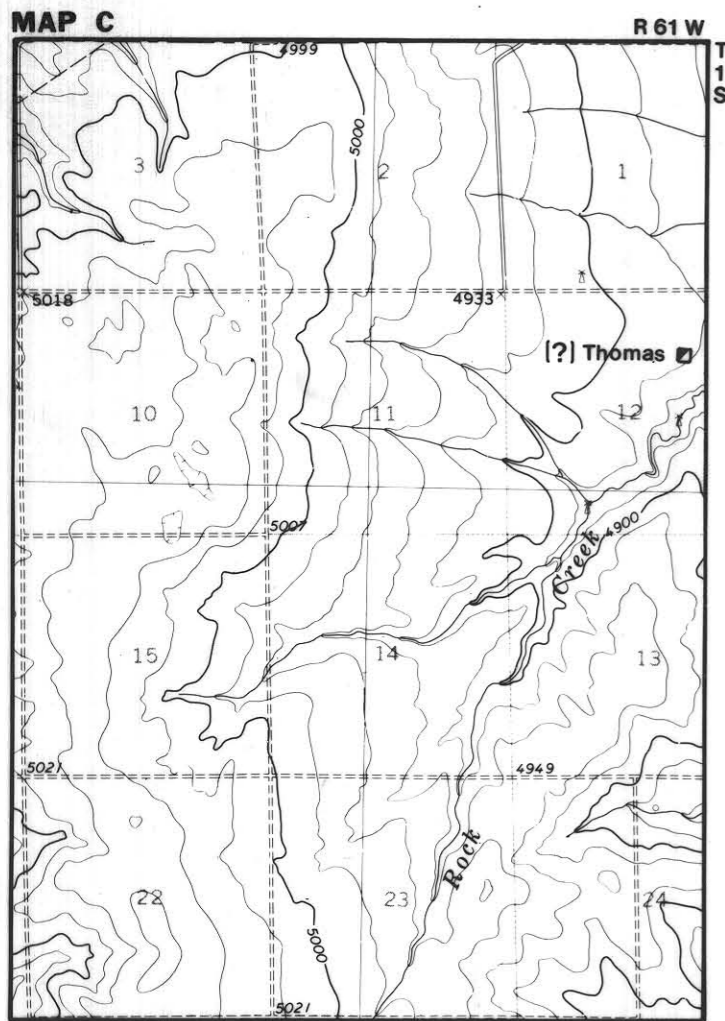
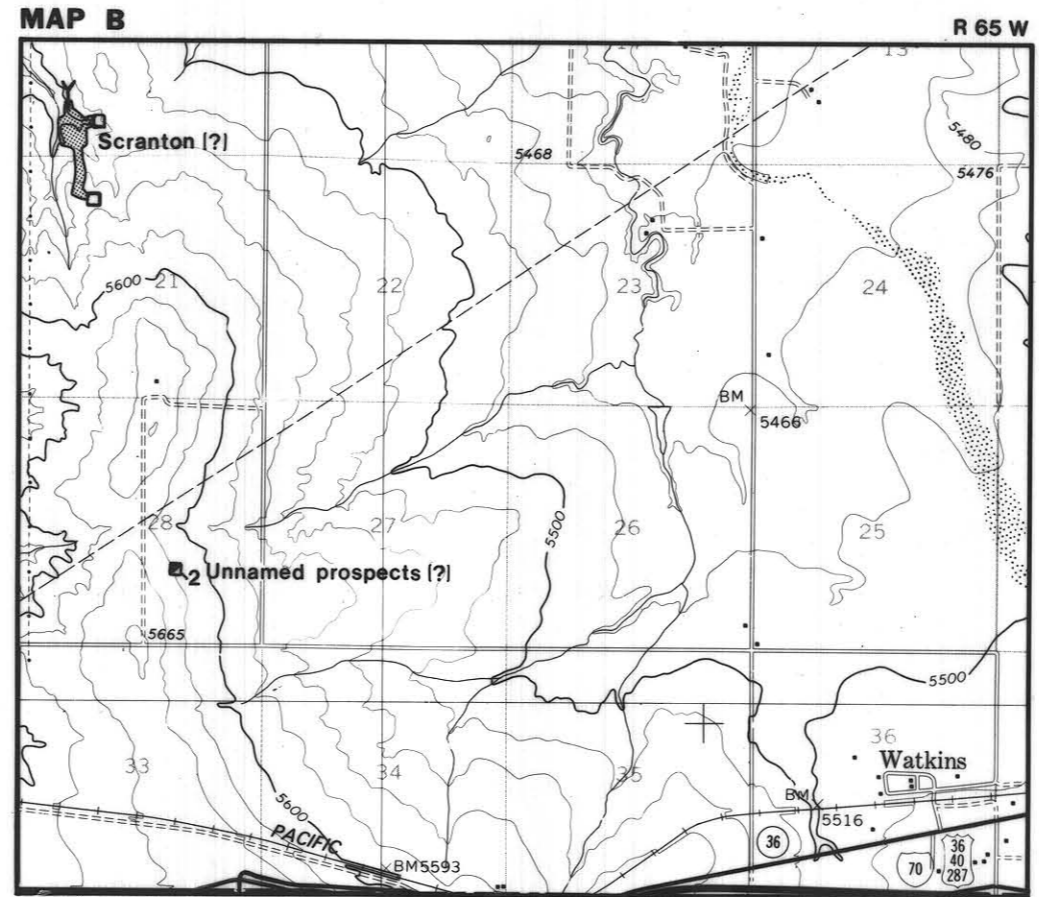
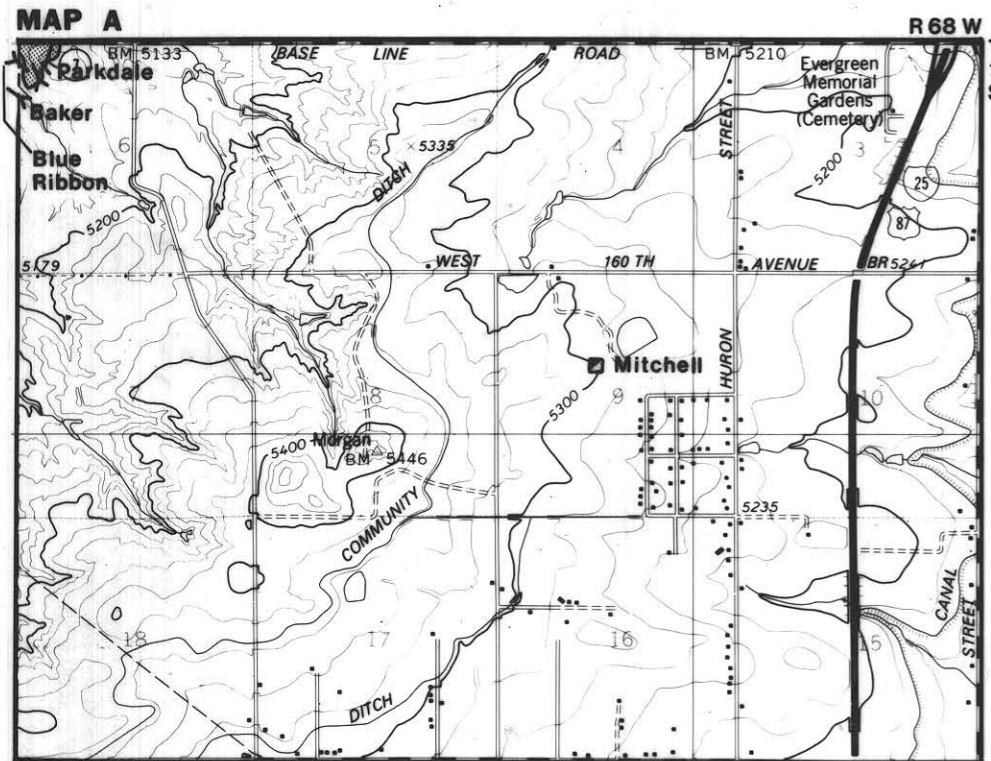


# Colorado Front Range Inactive Coal Mine Data and Subsidence Information Adams County

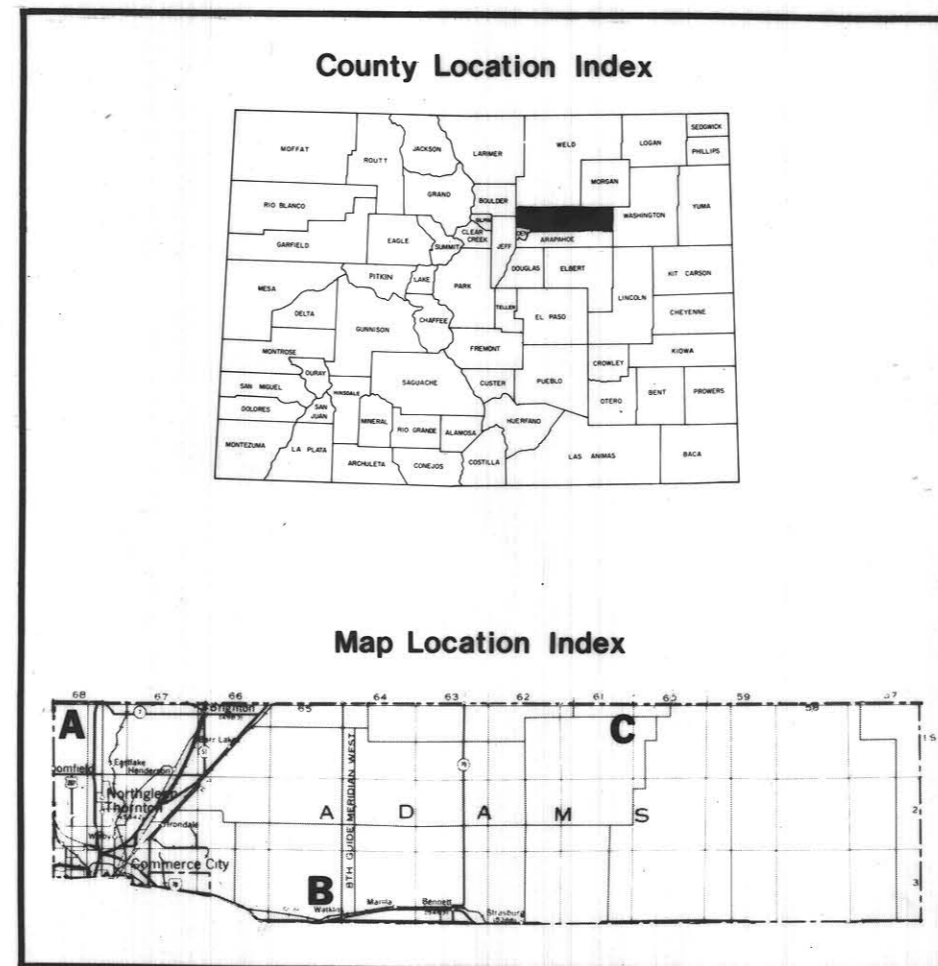
by J. E. Turney and L. Murray-Williams

COLORADO GEOLOGICAL SURVEY  
DEPARTMENT OF NATURAL RESOURCES  
JOHN W. ROLD, DIRECTOR

PLATE 1 OF 12  
1983



Base map from U.S.G.S. County Map Series



### EXPLANATION

- Mine shaft
- 3 Mine shaft - multiple openings
- Air shaft
- 2 Air shaft - multiple openings
- Y Adit
- Y-4 Adit - multiple openings
- ? Uncertain location
- S Feature location other than known mine
- Undermined area

### UNIQUE FEATURES

- Z Multiple mining zones
- \* Mine opening information
- S Subsidence feature(s)
- F Mine fire
- D Mine drainage

### ACKNOWLEDGMENT

This study was funded by U.S. Government Grant No. G5127081, Division of Mined Land Reclamation, Inactive Mine Program, Colorado Department of Natural Resources

